

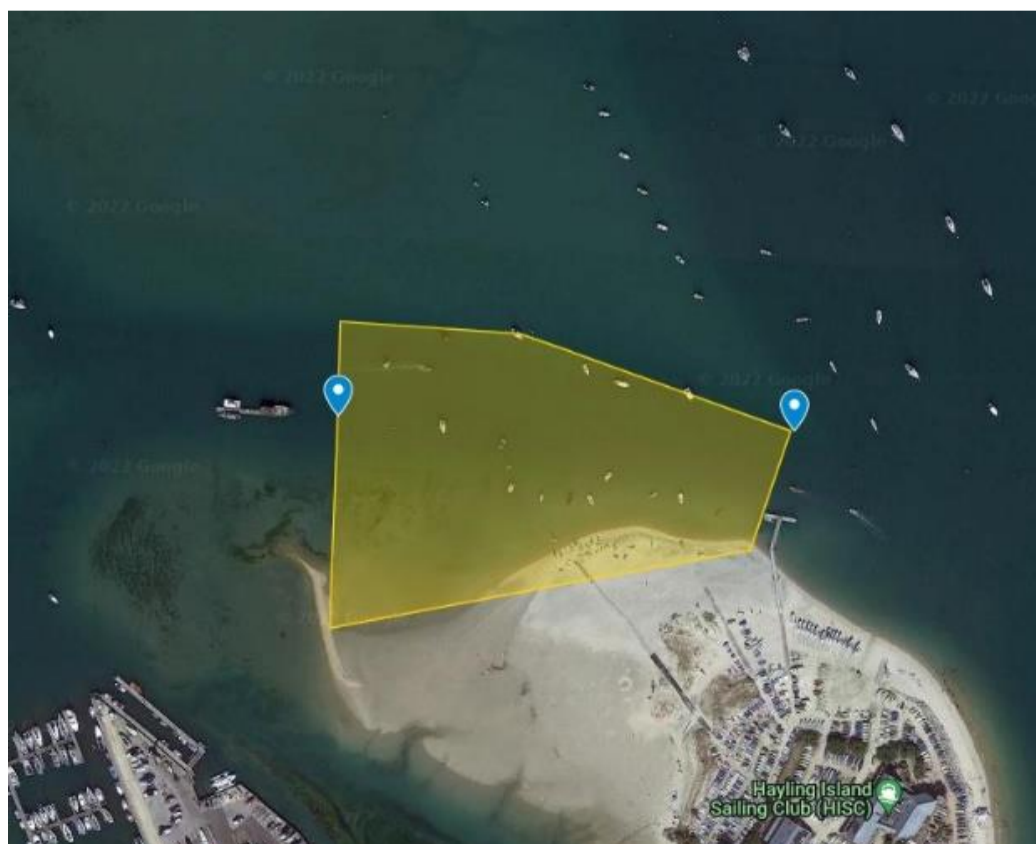


HAYLING ISLAND SAILING CLUB

## Voluntary Foiling Code of Conduct

This Voluntary Foiling Code of Conduct applies to all foiling craft making use of Chichester Harbour launching from HISC. This guidance will help you stay safe, have fun and enjoy the exhilarating world of foiling!

- **Equipment Check:** Before hitting the water, always inspect your equipment for any signs of damage or wear. Ensure that your wing, foil, board, and leash are in good condition and functioning properly. A routine equipment check will reduce the risk of accidents caused by equipment failure or foils falling apart.
- **If foiling alone,** make sure you tell someone you are going out before going afloat. Having a means of communication is also recommended. *i.e. a VHF radio or phone in an aqua pack.*
- Be conscious of and consider the following:
  - The harbour attracts a lot of visitors unfamiliar with the water, tide and constrained channels. Wing foilers specifically are able to change direction suddenly (tack, gybe, aerals) which can cause alarm and overreaction from other water users.
  - Wind direction, tide state, time of day, other users of marked channels and general congestion.
  - At lower tide states craft using marked channels have limited options for manoeuvre, particularly at busy times.
  - Marked channels will be particularly busy with incoming craft at the end of a weekend.
- Be sensible and aware of other water users generally including vulnerability of swimmers.
- Be mindful of those learning new skills on the water.
- Don't rely on sailing rights of way – instead, yield and make your intentions clear in advance.
- When conditions dictate foiling between HISC Causeway & Winner bank, be aware of congestion with other water users, particularly at low tide and busy times. Consider foiling in a different part of the channel.
- Look before making a move (gybe, tack, aerial etc) and take others in immediate vicinity into account in addition to the above. For example, make moves a sensible distance from stern of a yacht as opposed to across its bow.
- Be aware of foils when leaving equipment on the beach and try to mitigate potential impact to other beach users, which includes:
  - Trying to clearly mark or cover foil wings. Hang object on foil wing (i.e. harness). Where applicable, tie (inflatable) wing close to foil. Put foil covers on if available.
  - Consider laying foil board on side so foil mast is horizontal.
- Respect a “no-foiling zone” (i.e. in displacement mode) in the area West of the HISC pontoon and East of the first Port Hand Channel Marker heading into Sparkes, specifically at low water during peak summer times, as per the yellow area in image below.



## Revision History

Dec 2022	Initial version. Consultation & Voluntary Code of Conduct in one document.
Nov 2023	General updates as result of learnings from 2022. Split Voluntary Code of Conduct into standalone document.
April 2024	Equipment check and foiling alone check added