



2021 UK RS Elite Southern Area Championship

10 & 11 July 2021

Hayling Island Sailing Club, Hampshire, UK

SAILING INSTRUCTIONS

The notation '[NP]' in a rule of the sailing instructions (SIs) means that a boat may not protest another boat for breaking that rule. This changes RRS 60.1(a).

1 RULES

The racing will be governed by the rules as defined in *The Racing Rules of Sailing*.

2 COMMUNICATIONS WITH COMPETITORS

- 2.1 Notices to competitors will be posted on the online official notice board at:
www.hisc.co.uk/sailing/open-events/rs-elite-southerns/
Paper copies of notices will be posted on the glass wall adjacent to the club main entrance.
- 2.2 Signals made ashore will be displayed from the flag masts on the club race control box.
- 2.3 Flag D displayed ashore with a sound means: 'The warning signal will be made not less than 60 minutes after flag D is displayed'. Boats are advised not to leave the harbour until this signal is made.
- 2.4 Any change to the schedule of races will be posted by 20:00 on the day before it will take effect and any change to the sailing instructions will be posted at least 90 minutes before the scheduled warning signal of the first race affected.
- 2.5 On the water, the race committee intends to monitor and communicate with competitors on VHF radio channel 37(M), including notification of boats penalized under RRS 30 (*Starting Penalties*).
- 2.6 If the race committee displays pennant 8, alternative VHF channel 8 will be used.
- 2.7 [DP][NP] Other than as above, or in an emergency, a boat that is racing shall not make voice or data transmissions and shall not receive voice or data communication that is not available to all boats.
- 2.8 The class flag will be Flag E.

3 SCHEDULE OF RACES

- 3.1 The race schedule is as follows:

Date:	Time of 1st warning signal & scheduled races per day:	
	Time:	# Races:
10 July	13:00	3
11 July	11:00	2

- 3.2 The warning signal for each succeeding race will be made as soon as practicable.
- 3.3 To alert boats that a race will begin soon, the orange starting line flag will be displayed with one sound at least two minutes before a warning signal is made.
- 3.4 On the last day of the regatta no warning signal will be made after 15:00.

4 RACING AREAS

- 4.1 Attachment A shows the location of racing areas 'Alpha', 'Bravo' and 'Charlie'.

- 4.2 The area to be used will be posted each day on the official notice board.
- 4.3 **Danger Area:** The entrance to Chichester Harbour is low lying and indistinct and is flanked on either side by West Pole and East Pole Sands that extend for more than a mile offshore. The West Pole and East Pole Sands merge to form Chichester Bar a little over half a mile offshore. Ebb tides in the entrance to the harbour can run at up to six knots on springs and, with a falling tide and strong winds from a southerly sector, a dangerous sea may be encountered. At certain states of the tide, it is difficult for patrol boats to operate in the area of West Pole Sands. Boats are therefore advised to follow the marked navigation channel.

5 THE COURSES

- 5.1 The diagrams in Attachment B show the courses, the course designations, the approximate angles between legs, the order in which marks are to be passed, and the side on which each mark is to be left.
- 5.2 The gate 2s/2p may be replaced by a single mark to be left to port.
- 5.3 No later than the warning signal, the race committee signal boat will display the course designation and the approximate compass bearing of the first leg.
- 5.4 To change the next leg of the course, the race committee will move the original mark (or the finishing line) to a new position, or lay a new mark and remove the original mark as soon as practicable.

6 MARKS

- 6.1 Marks 1, 1a, 2s and 2p will be yellow inflated cylinders with black bands.
- 6.2 New marks, as provided in SI 5.4, will be of the same shape and colour as the original marks.
- 6.3 Starting marks will be a race committee signal boat at the starboard end, and a boat or buoy with an orange flag at the port end.
- 6.4 Finishing marks will be a race committee boat and a buoy with a blue flag.

7 THE START

- 7.1 The starting line will be between staffs displaying orange flags on the starting marks.
- 7.2 A boat that does not start within four minutes after her starting signal will be scored Did Not Start without a hearing. This changes RRS A5.1 and A5.2.

8 THE FINISH

The finishing line will be between staffs displaying blue flags on the finishing marks.

9 TIME LIMITS & TARGET TIMES

- 9.1 The time limit and target time in minutes is as follows:

<i>Time limit</i>	<i>Target time</i>	<i>Finishing window</i>
90	45	15

- 9.2 The Finishing Window is the time for boats to finish after the first boat sails the course and finishes. Boats failing to finish within the Finishing Window will be scored Did Not Finish. This changes RRS 35, A4 and A5.
- 9.3 Failure to meet the Target Time will not be grounds for redress. This changes RRS 62.1(a).

10 HEARING REQUESTS

- 10.1 The protest time limit is 90 minutes after the last boat in that class finishes the last race of the day or the race committee signals no more racing today, whichever is later. The time will be posted on the official notice board.
- 10.2 Hearing request forms are available at the race office.
- 10.3 Notices will be posted no later than 30 minutes after the protest time limit to inform competitors of hearings in which they are parties or named as witnesses, and the location where hearings will take place.

11 SCORING

- 11.1 One race is required to be completed to constitute a series.
- 11.2 (a) When fewer than four races have been completed, a boat's series score will be the total of her race scores.
- (b) When four or more races have been completed, a boat's series score will be the total of her race scores excluding her worst score
- 11.3 To request correction of an alleged error in posted race or series results, a boat may complete a scoring enquiry form available at the race office.

12 SAFETY REGULATIONS

- 12.1 Competitors are advised to wear personal flotation devices at all times while afloat, except briefly while adjusting clothing or personal equipment.
- 12.2 Check-out and check-in of competitors will apply using the SailEvent electronic system.
- (a) [DP][NP] Competitors shall signify their intention before racing on Sail/Event.
- (b) [DP][NP] Competitors shall check-in on SailEvent on returning to shore after racing.
- 12.3 [DP][NP] A boat that retires from a race, or does not intend to start a race, shall notify the race committee as soon as possible.

13 REPLACEMENT OF CREW OR EQUIPMENT

- 13.1 [DP] Substitution of competitors is not allowed without prior written approval of the race committee.
- 13.2 [DP] Substitution of damaged or lost equipment is not allowed unless authorized in writing by the race committee. Requests for substitution shall be made to the committee at the first reasonable opportunity, which may be after the race

14 EQUIPMENT & MEASUREMENT CHECKS

A boat or equipment may be inspected at any time for compliance with the class rules, notice of race and sailing instructions.

15 SUPPORT TEAMS

[DP] Team leaders, coaches and other support persons shall stay outside areas where boats are racing from the time of the preparatory signal for the first start until all boats have finished or retired or the race committee signals a postponement, general recall or abandonment.

16 BERTHING & HAUL-OUT RESTRICTIONS

- 16.2 [DP][NP] Boats shall be kept in their allocated berths whilst in the harbour.
- 16.3 [DP][NP] Boats shall not be hauled out during the championship except with and according to the terms of prior written permission of the race committee.

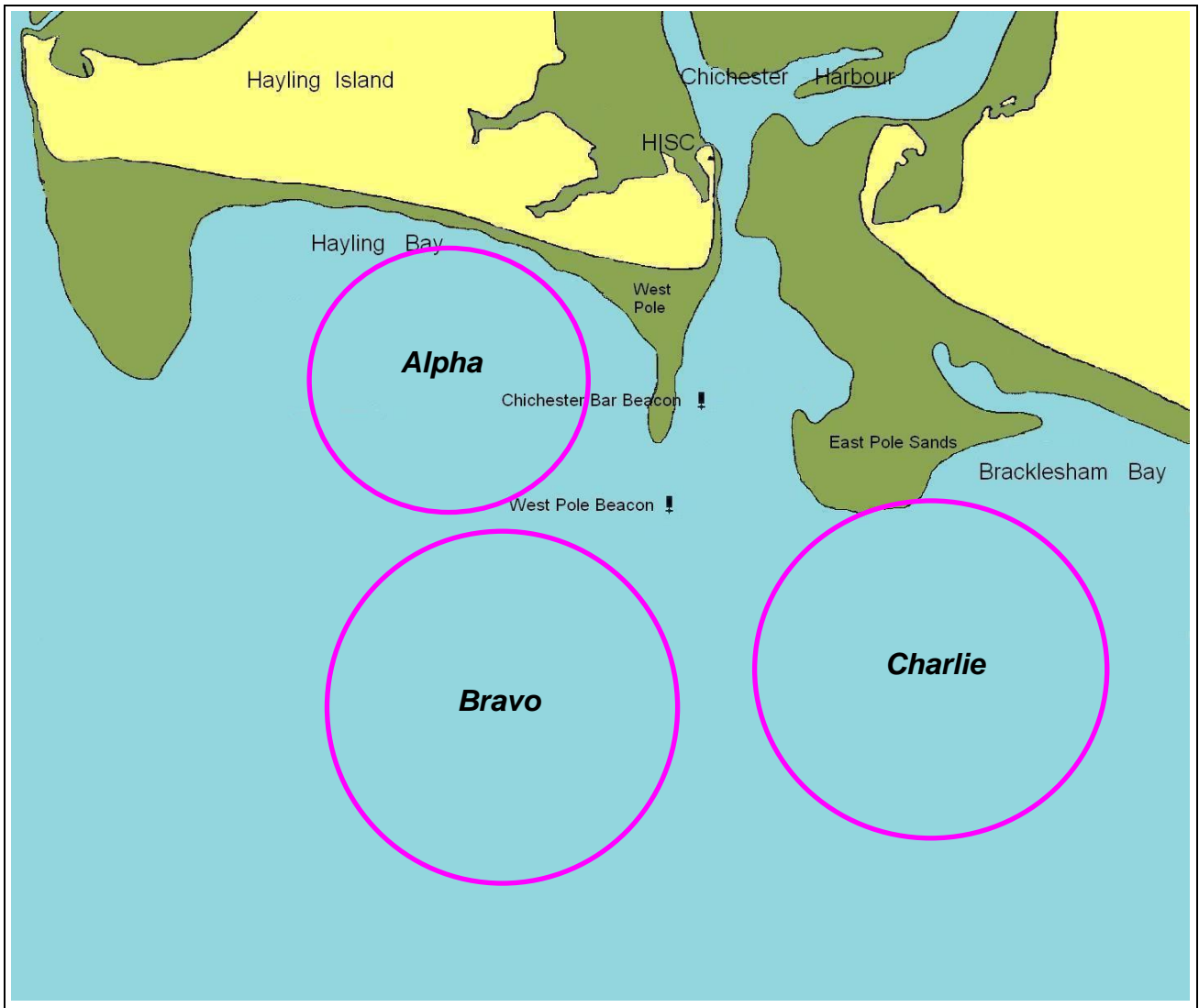
17 RISK STATEMENT

RRS 3 states: 'The responsibility for a boat's decision to participate in a race or to continue to race is hers alone.' By participating in this event each competitor agrees and acknowledges that sailing is a potentially dangerous activity with inherent risks. These risks include strong winds and rough seas, sudden changes in weather, failure of equipment, boat handling errors, poor seamanship by other boats, loss of balance on an unstable platform and fatigue resulting in increased risk of injury. Inherent in the sport of sailing is the risk of permanent, catastrophic injury or death by drowning, trauma, hypothermia or other causes.

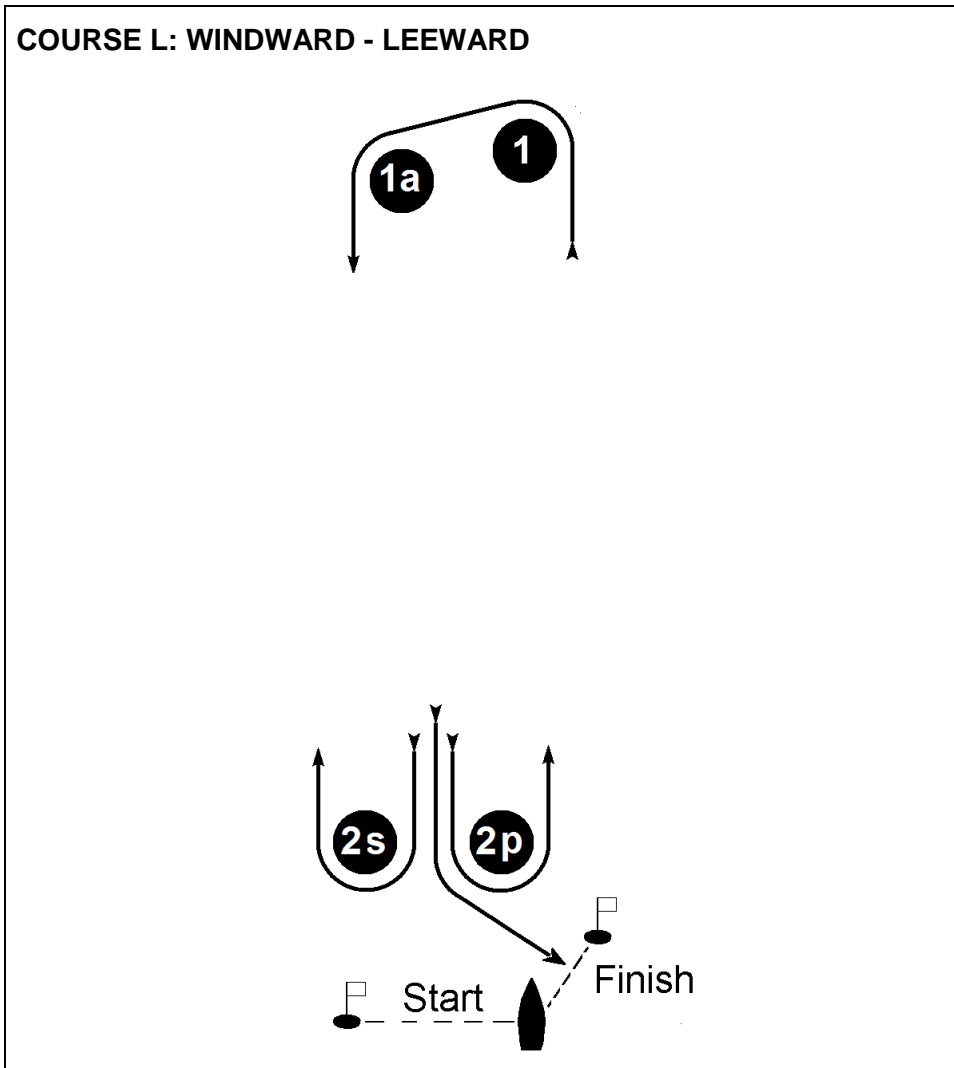
18 INSURANCE

[DP][NP] Each participating boat shall be insured with valid third-party liability insurance with a minimum cover of £2 million per incident or the equivalent.

Attachment A
RACING AREAS



Attachment B
COURSE DIAGRAMS



Signal	Mark rounding order
L2	Start – 1 – 1a – 2s/2p – 1 – 1a – 2p – Finish
L3	Start – 1 – 1a – 2s/2p – 1 – 1a – 2s/2p – 1 – 1a – 2p – Finish