

HAYLING ISLAND SAILING CLUB



# Welcome to HISC RS 200 National Tour Open Regatta 2021

- » Apologies, we are not able to welcome you in person, for a little bit longer Covid regulations and common sense prevail.
- » Please be respectful to everybody on site at the club and do everything within your power to reduce the spread of Covid 19.
- » Please follow all Covid regulations whilst at HISC and please be particularly vigilant in protecting the club staff and volunteers
- » We very much hope you enjoy the event.

# Race Team

- Race Officer – David Nicholls
- Timekeeper – Sarah Smith
- Pin and gate boat ARO - Piers Nicholls
- Mark Layers – Andrew Streeter & Tim Polglaise
- Event Safety Officer - RO
- Race Box – HISC team TBA
- Beach/Tallies – Carol & Gil Carter

# Race Management Principles

- Here to provide fair, safe, fun racing
- Using the new 2021/24 RRS
- Orange or G, gate flag will be used – minimum 2 mins before the warning flag
- The G flag may well be displayed earlier, probably between 5 - 2 mins before the warning flag
- Starting – if the conditions are suitable we will go for a Gate start - please read the SI on this and see the video if you are unsure [https://youtu.be/KyCC\\_h-iF9U](https://youtu.be/KyCC_h-iF9U). Its highly unlikely we will use a Guard Boat RIB so be careful not to infringe the Pathfinder
- Start sequence: 5, 4,1, GO or 5,4,1,gate opens at 0
- Target race time = 40 min a race, for the lead boat
- Quick turnaround of races
- Although we are replicating many of the features of a National Championship the priority over a two day event will be to get the races in - we do not have the luxury of spare days so please try to reduce wasted time by arriving promptly in the starting area. Do not under estimate the tide delaying your transit to the bay. I have no intention of waiting for stragglers

# Sailing instructions

- [http://www.hisc.co.uk/media/14888/2021\\_rs-200-open-regatta-si-v11.pdf](http://www.hisc.co.uk/media/14888/2021_rs-200-open-regatta-si-v11.pdf)

# Key SI's to think about

- Official noticeboard – online
- Shore signals from Race Box
- Gate starts - the amount of time the gate will be open and the Pathfinder's sail number, will be displayed on the committee boat. As this is roughly a 50 boat event the gate will not be open for too long, so don't linger. Pathfinders will be hailed when they have the option to tack, if the Pathfinder does tack the Gate boat will carry on a bit further. The tighter the starting the fairer the race! If a start is recalled, please return as quickly as possible to avoid delays. Read this process from the SIs
- It is highly unlikely that we will deploy a Guard boat.
- Buoys – Blue cylinders
- Courses – Windward, Leeward with top spreader and Leeward gate. The number of laps will be displayed and can change between races!
- Life Jackets (PFDs) must be worn when afloat
- Tally system being used. Please tally promptly when the boards open
- If you finish 10th or 11th in a race you maybe the next Pathfinder or reserve Pathfinder, please check the board on the committee boat and check in if it's you. Discuss with your crew how you can do a good job of being Pathfinder. Failure to check in is penalised!

# Sailing areas





# Committee Boat – Lady G





# Tides for the event

Saturday: HW- 1752 4.4

Sunday: HW - 0613 4.2

The weather forecast will be posted in the club lobby.

# **Safety Briefing**

**Your attention is drawn to the risk statement within the NOR and SI's, please comply with direction of safety RIB crews and note the following;**

# Having a safe event

- **Tallies - vital for your safety**

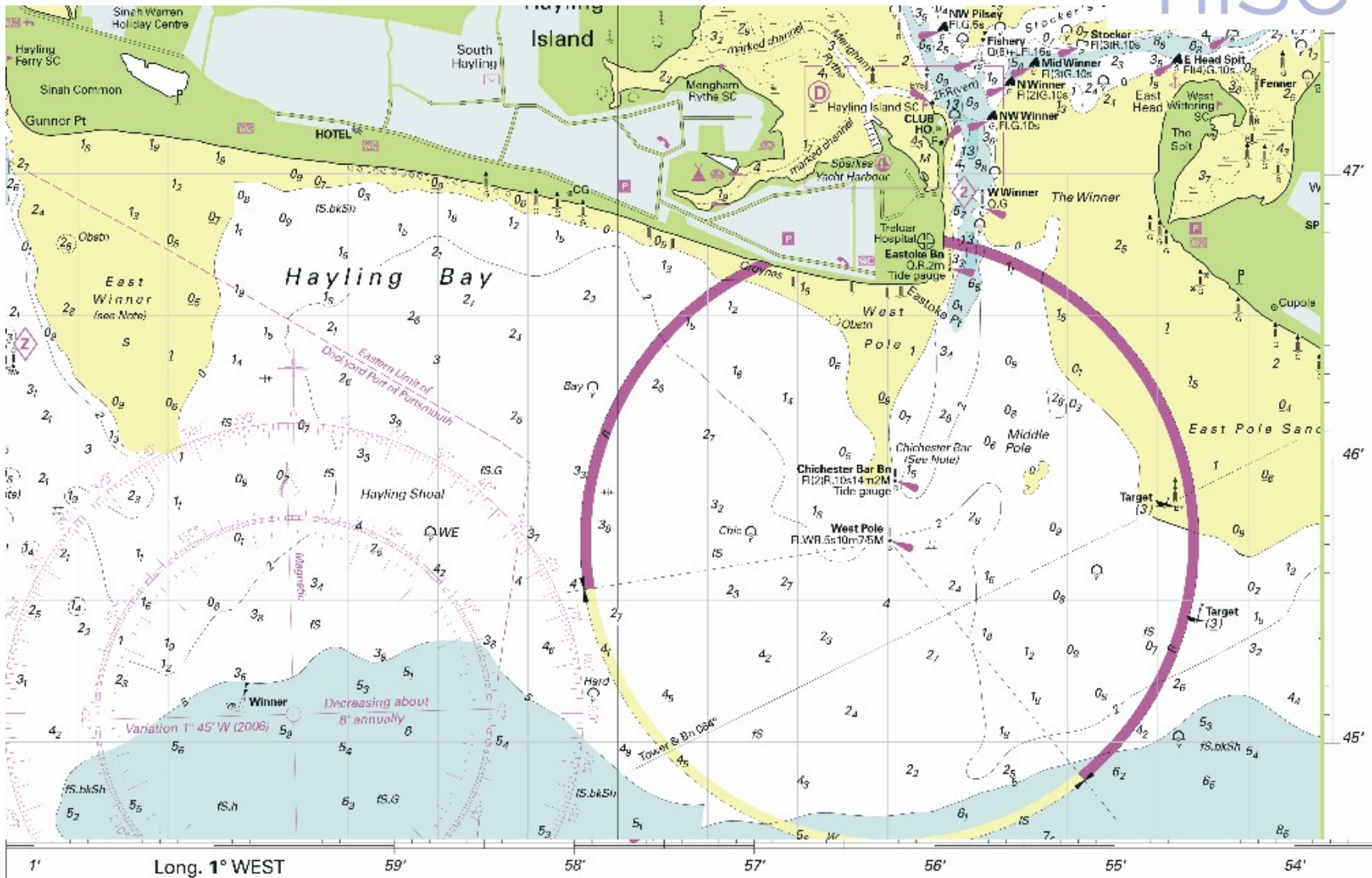
- Tally Boards BY SLIPWAYS NEAR CAR PARK – collect wrist band. ONLY ONE PERSON TO COLLECT
- hand back ASAP when ashore
- D Flag to release you - don't delay launching please
- try to let a patrol RIB know if retiring
- See Sis for tally penalties

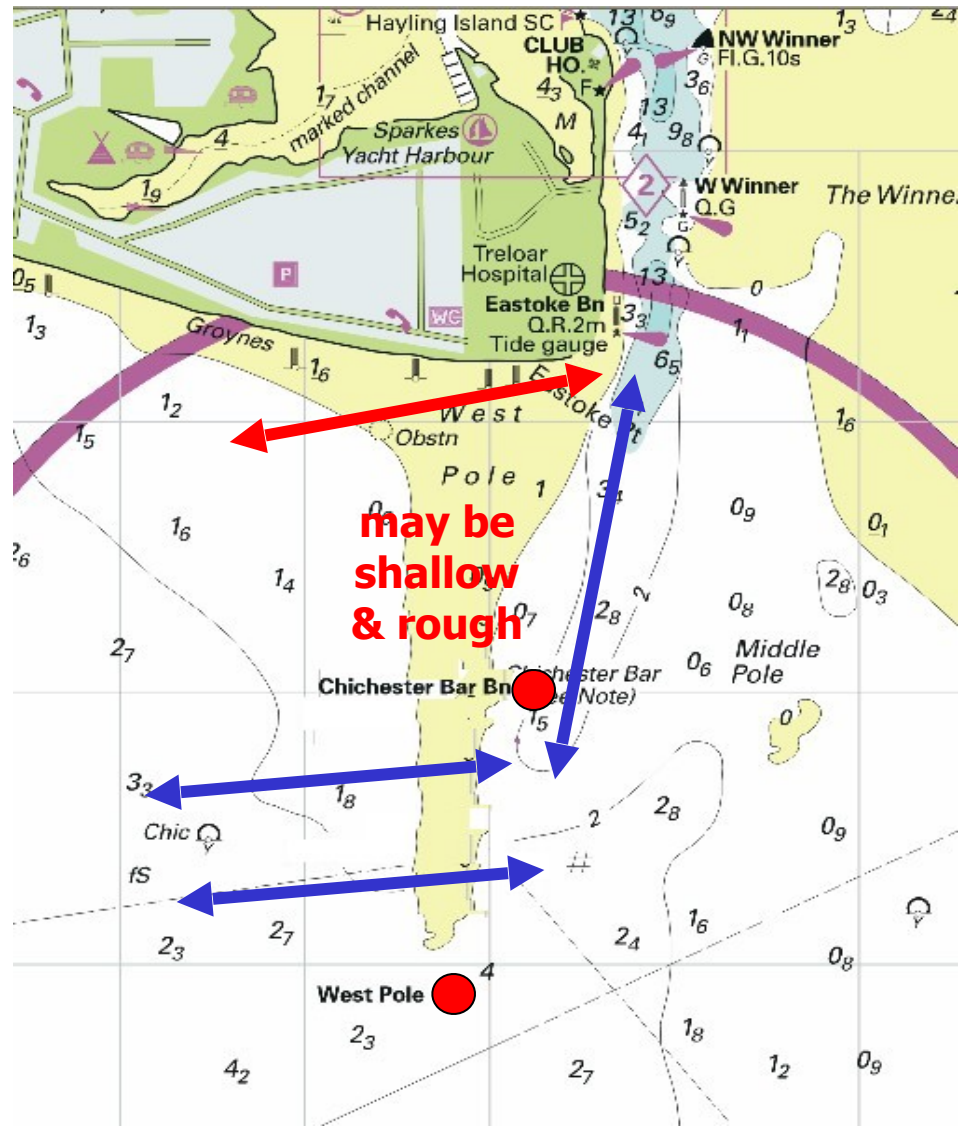
- **Weather - if it's unkind**

- strong wind, we escort you home, think carefully about the transit route to and from Hayling Bay to Chi Harbour
- Calm wind , we will try to tow you home - please be patient
- fog, gather at CB or a mark, we will lead you home

# Having a safe event

- **what to expect from patrol RIBs**
  - their job is to ensure safety of people
  - sorry, not the 'AA', broken boats may have to wait, but we will try to help
  - Will carry water/food for you – but mark clearly please
- **transit to and from the race area**
  - potentially hazardous water
  - not always easy to come home, be well prepared
  - patrol RIBs will direct you to safe water crossing points





may be shallow & rough