



Fireball Class 60th Anniversary Regatta

2 – 3 July 2022

Hayling Island Sailing Club, Hampshire, UK

SAILING INSTRUCTIONS

The notation '[NP]' in a rule of the sailing instructions (SIs) means that a boat may not protest another boat for breaking that rule. This changes RRS 60.1(a).

1 RULES

The regatta will be governed by the rules as defined in The Racing Rules of Sailing.

2 COMMUNICATIONS WITH COMPETITORS

2.2 Notices to competitors will be posted on the online official notice board at:

www.hisc.co.uk/sailing/open-events/fireball-60-anniversary-om/

2.3 Signals made ashore will be displayed from the flag masts on the club race control box.

2.4 [DP][NP] Boats shall not leave the shore until flag D is displayed ashore. The warning signal will be made not less than 60 minutes after flag D is displayed (30 minutes if racing inside Chichester Harbour).

2.5 Any change to the format or schedule of races will be posted by 18:00 on the day before it will take effect and any change to the sailing instructions will be posted at least 30 minutes before flag D is displayed (SI 2.4) on the day it will take effect.

2.6 [DP] While racing, except in an emergency, a boat shall not make voice or data transmissions and shall not receive voice or data communication that is not available to all boats.

2.7 The class flag will be: Pennant 8

3 SCHEDULE OF RACES

3.2 The race schedule is as follows:

| Date: | Time of 1st warning signal & scheduled races per day: | |
|--------------|-----------------------------------------------------------------------------|-----------------|
| | Time: | # Races: |
| Sat 2 July | 13:00 | 3 |
| Sun 3 July | 11:00 | 3 |

3.3 The warning signal for each succeeding race in a day will be made as soon as practicable after the previous race.

3.4 To alert boats that a race or sequence of races will begin soon, the orange starting line flag will be displayed with one sound at least two minutes before a warning signal is made.

3.5 On the last day of the regatta no warning signal will be made after 14:30.

4 RACING AREAS

4.2 Attachment A shows the location of racing areas 'Alpha', 'Bravo' and 'Charlie'. Racing may also take place in Chichester Harbour.

4.3 The area to be used will be posted on the official notice board.

- 4.4 **Danger Area:** The entrance to Chichester Harbour is low lying and indistinct and is flanked on either side by West Pole and East Pole Sands that extend for more than a mile offshore. The West Pole and East Pole Sands merge to form Chichester Bar a little over half a mile offshore. Ebb tides in the entrance to the harbour can run at up to six knots on springs and, with a falling tide and strong winds from a southerly sector, a dangerous sea may be encountered. At certain states of the tide, it is difficult for patrol boats to operate in the area of West Pole Sands. Boats are therefore advised to follow the marked navigation channel.

5 THE COURSES

- 5.2 The diagram in Attachment B show the courses, the course designations, the approximate angles between legs, the order in which marks are to be passed, and the side on which each mark is to be left.
- 5.3 No later than the warning signal, the race committee signal boat will display the course designation and the approximate compass bearing of the first leg.
- 5.4 When racing takes place in Chichester Harbour, the course may include fixed marks.
- (a) When fixed marks are used, the course will be posted on the official notice board at least 60 minutes before the warning signal for the race.
- (b) The course may be changed when the committee signal boat displays flag L with a sound, together with a new course.
- 5.5 To change the next leg of the course, the race committee will move the original mark (or the finishing line) to a new position.

6 MARKS

- 6.2 Marks 1, 2 and 3 will be yellow inflated cylindrical buoys.
- 6.3 Additional marks will apply for Harbour racing, see SI 5.4.
- 6.4 Starting marks will be a race committee signal boat at the starboard end, and a boat or buoy with an orange flag at the port end.
- 6.5 Finishing marks will be a race committee boat and a boat or buoy with a blue flag.

7 THE START

The starting line will be between staffs displaying orange flags on the starting marks.

8 THE FINISH

- 8.2 The finishing line will be between staffs displaying blue flags on the finishing marks.
- 8.3 The race committee may award a finishing place to a boat by pointing flag W at her with a sound. The signaled boat shall be deemed to have finished, and the score awarded shall be the position she occupied at the time of the signal. If two or more overlapped boats are signaled, they shall be scored as if they were tied. This changes RRS 28.1 and A3.

9 TIME LIMIT

The time limit for a race will be 75 minutes.

10 HEARING REQUESTS

- 10.2 The protest time limit is 90 minutes after the last boat in that class finishes the last race of the day or the race committee signals no more racing today, whichever is later. The time will be posted on the official notice board.
- 10.3 Hearing request forms are available at the race office.
- 10.4 Notices will be posted no later than 30 minutes after the protest time limit to inform competitors of hearings in which they are parties or named as witnesses, and the location where hearings will take place.

11 SCORING

- 11.2 One race is required to be completed to constitute a series.
- 11.3 (a) When fewer than three races have been completed, a boat's series score will be the total of her race scores.

- (b) When three or more races have been completed, a boat's series score will be the total of her race scores excluding her worst score.

11.4 To request correction of an alleged error in posted race or series results, a boat may complete a scoring enquiry form available at the race office.

12 SAFETY REGULATIONS

12.2 [DP] RRS 40.1 (*Personal Flotation Devices*) shall apply at all times while afloat.

12.3 Check-out and check-in of competitors will apply as follows:

- (b) The tally control point to check-out and check-in competitors will be located at the launching area.
- (c) Tallies comprise numbered rubber wristbands. Numbers will be allocated at registration, and posted on the official notice board. Tallies shall be worn visibly by all competitors, over clothing, on the right wrist, at all times while afloat.
- (d) [DP][NP] Competitors shall collect the tallies before racing each day.
- (e) [DP][NP] Competitors shall check-in immediately on returning to shore after racing, by returning the tallies to tally control.

Breaches of (d) or (e) of this SI will incur a standard penalty without a hearing, or a discretionary penalty after a hearing. The standard penalty will be 1 point for a first infringement, and 3 points for subsequent infringements, applied as in RRS 64.2. This changes RRS 63.1 and A5.

12.4 [DP][NP] A boat that retires from a race, or does not intend to start a race, shall notify the race committee before leaving the race area.

12.5 [DP][NP] Boats shall return to and remain in their assigned berths whilst ashore.

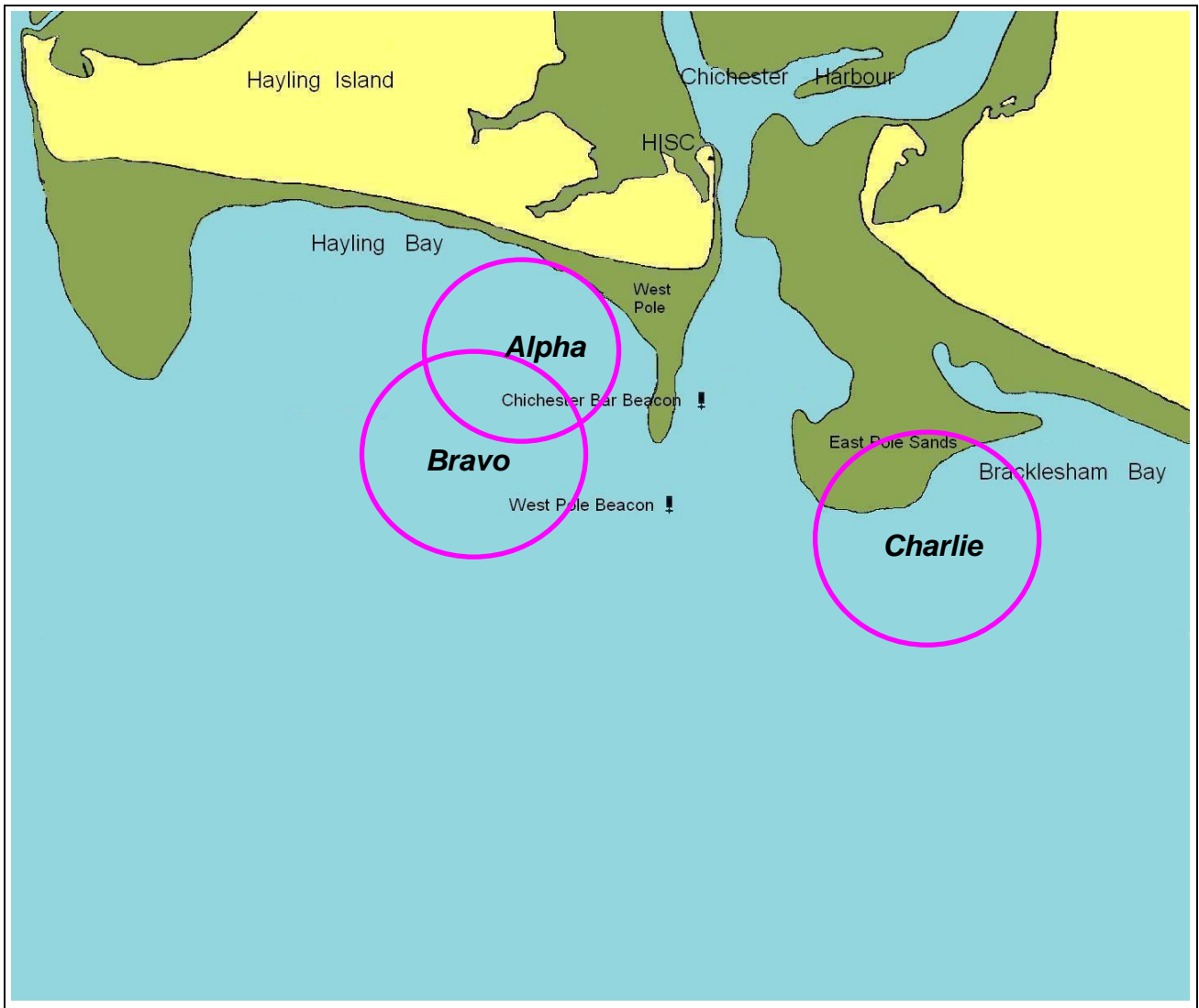
13 REPLACEMENT OF CREW

[DP] Substitution of competitors is not allowed without prior written approval of the race committee.

14 SUPPORT TEAMS

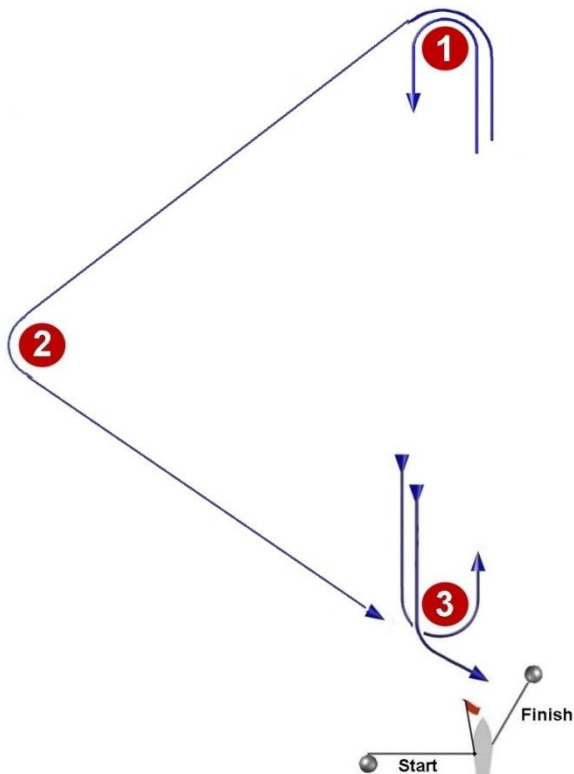
[DP][NP] Team leaders, coaches and other support persons shall stay outside areas where boats are racing from the time of the preparatory signal for the first start until all boats have finished or retired or the race committee signals a postponement, general recall or abandonment.

**Attachment A
RACING AREAS**



Attachment B
COURSE DIAGRAM

Course LT: Windward/Leeward/Triangle
Course TL: Triangle/Windward/Leeward



Signal: Mark rounding order:

LT2 Start - 1 - 3 - 1 - 2 - 3 - Finish

LT3 Start - 1 - 3 - 1 - 2 - 3 - 1 - 3 - Finish

TL2 Start - 1 - 2 - 3 - 1 - 3 - Finish

TL3 Start - 1 - 2 - 3 - 1 - 3 - 1 - 2 - 3 - Finish