

Round Hayling Challenge Course and Safety Briefing



A promotional banner for the Round Hayling Island Challenge. The background is a blue-tinted collage of images showing athletes in action: a triathlete on the left and a group of kayakers on the right. In the center is a circular logo with a white border. Inside the logo, the text 'HISC X THESUPCO.COM' is at the top, 'HAYLING ISLAND SAILING CLUB' is in the middle with a red pennant icon, and 'ROUND HAYLING ISLAND CHALLENGE' is at the bottom with a stylized 'SUP' logo. Below the logo, the text 'ROUND HAYLING ISLAND CHALLENGE' is written in large, bold, white italicized letters, followed by 'HISC X THESUPCO.COM' in smaller white letters. At the bottom of the banner are four logos: 'DUOTONE' with a play button icon, 'redpaddleCO' with a red square icon, 'SALCOMBE GIN' with a vertical line separator, and 'STARBOARD INNOVATION QUALITY' with a star icon.

ROUND HAYLING ISLAND CHALLENGE
HISC X THESUPCO.COM

DUOTONE | **redpaddleCO** | **SALCOMBE GIN** | **STARBOARD**
INNOVATION QUALITY

Welcome.

1. Registration
2. Housekeeping
3. The Challenge
4. Safety
5. Start Times/Sequence etc



Registration

- 1) Registration - Please make sure you pick up your vest and tracker
 - 1) Bib number to be on the outside and visible at all times
 - 2) Sign off at the end
- 2) Follow all safety boat advice
- 3) Keep the island on the “left”
- 4) Clean Ocean – If it goes afloat – eat it, drink it, bring it back

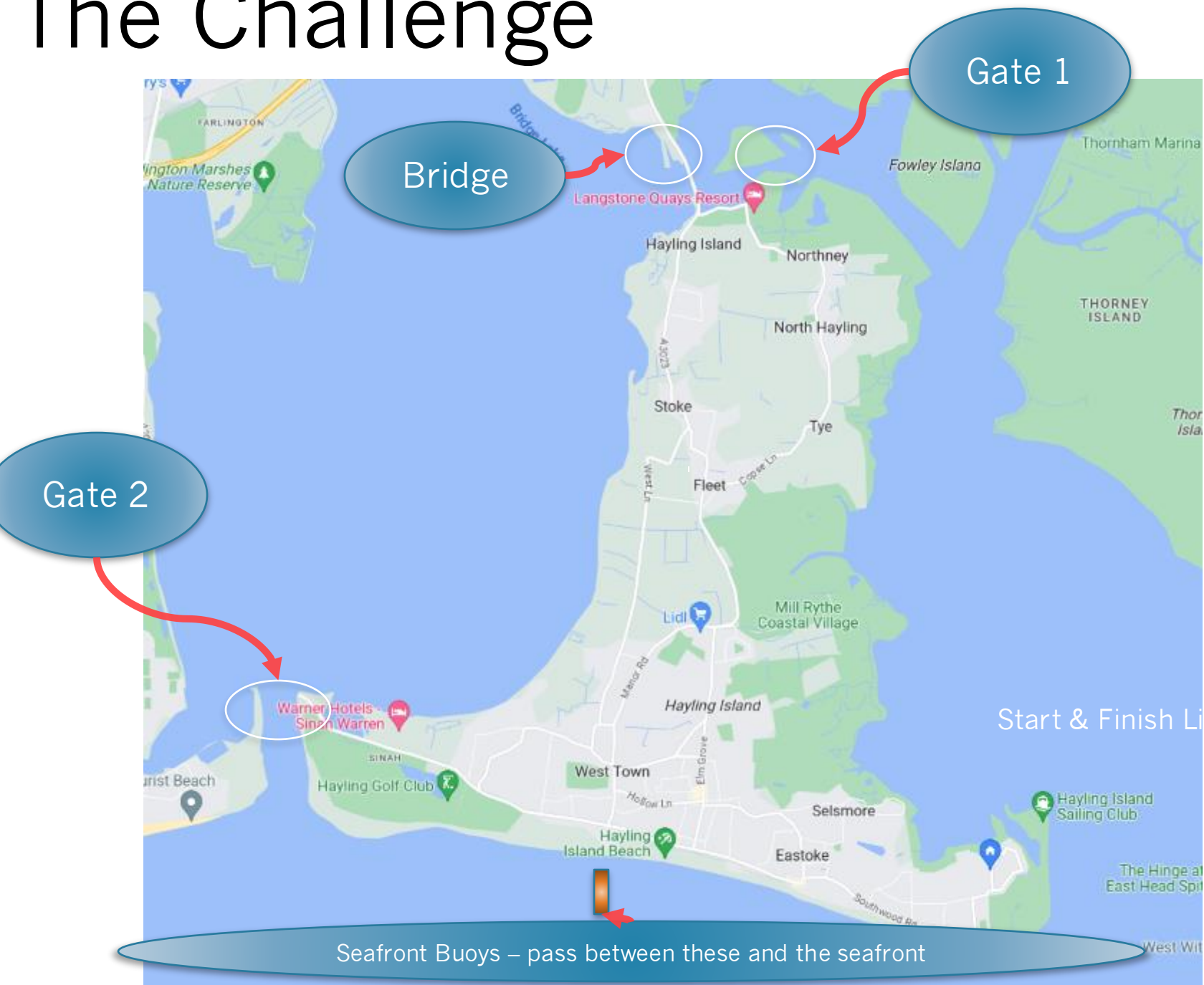


Housekeeping

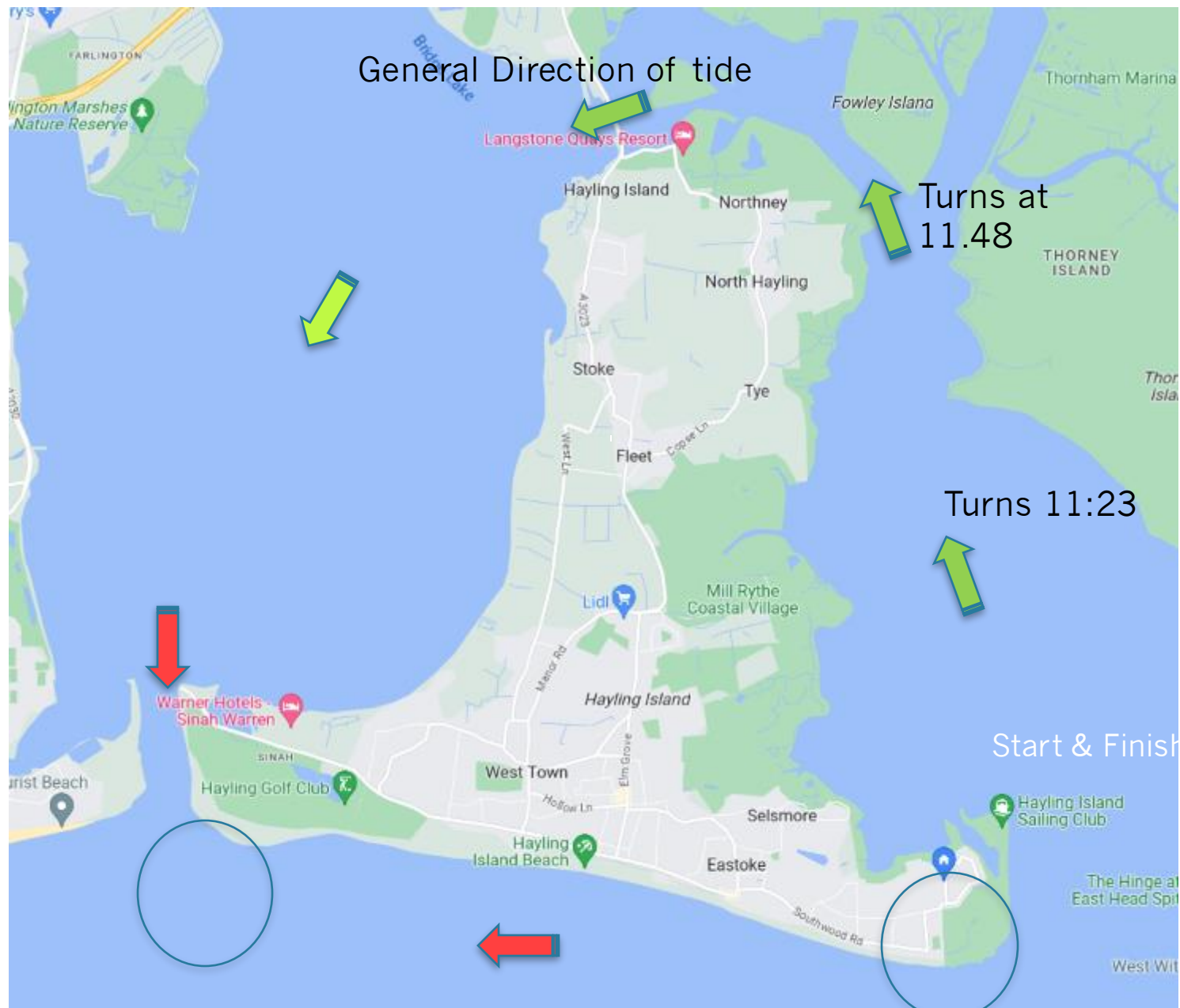
- 1) Changing Rooms - Code
- 2) Coffee, Food and Bar
- 3) Enjoy your visit to Hayling Island Sailing Club
- 4) Entertainment



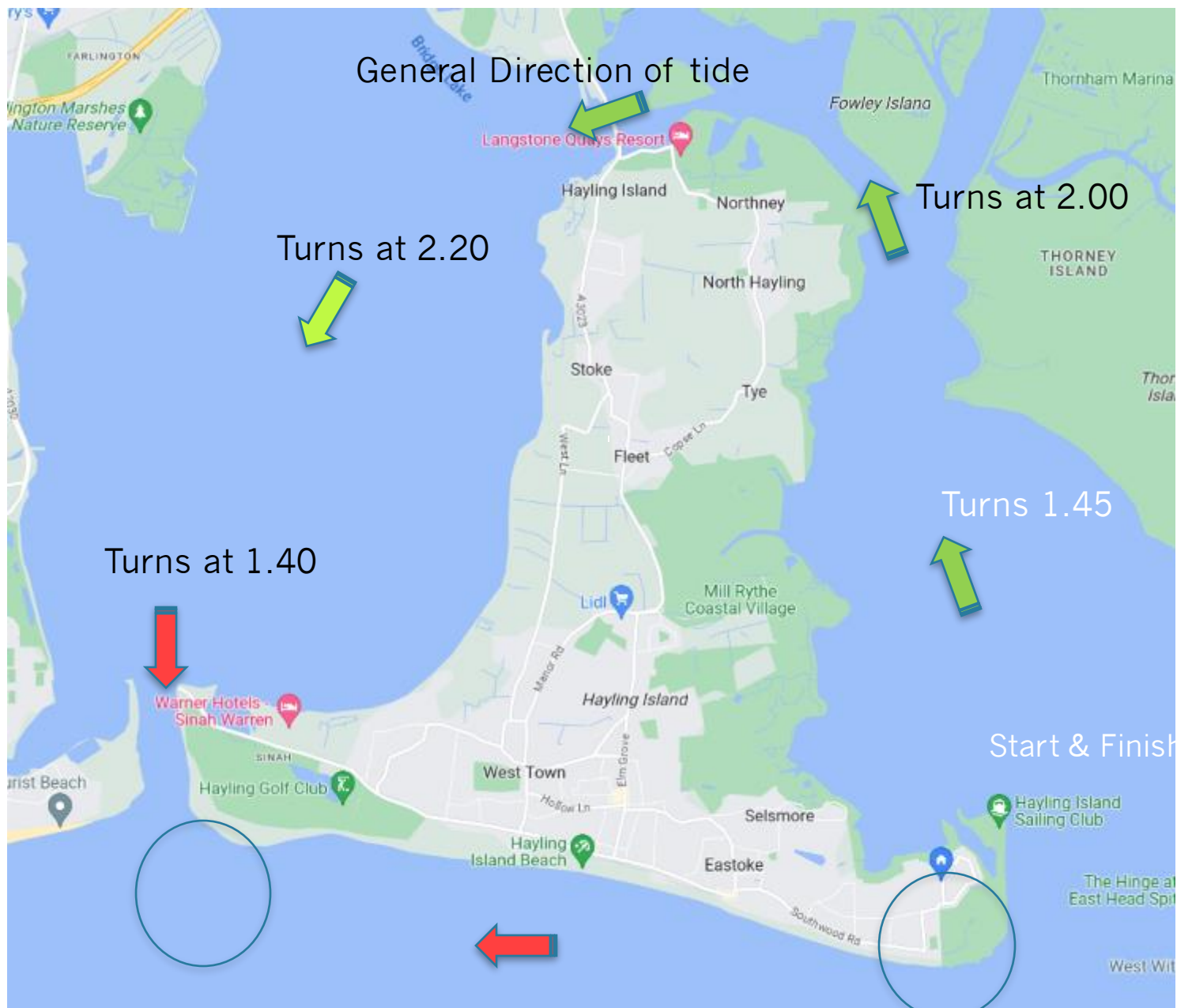
The Challenge



Tides: High Tide 14:44 - Height 4.5



Forecast Wind Direction TBA



Options

Courses

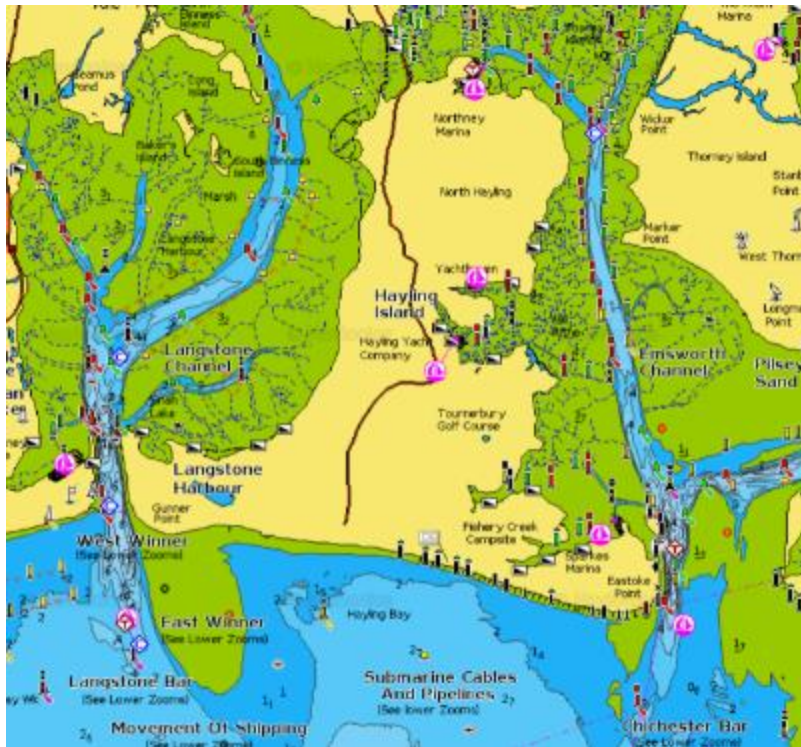
1. “Bridge and Back” – approx. 9 Mile Course

- 1) Northney and back
- 2) Round the “gate boat and back to HISC
- 3) If red flag on gate boat – must go back.

2. Round Island – approx 14 miles in a straight line with 2 “gates”

- 1) Northney
- 2) Langstone – “guard boat” - subject to timing
- 3) Two orange buoys anchored off the sea front – must pass between these and the seafront.

Mud and Currents and Stuff.



We will be near high tide, but if you run around be very careful (go back the way you came) – do NOT walk on the mud.



Strong tides, especially at Harbour entrances
East Winner – eddy may cause waves to back up
Chichester - stay out of the main channel

Northney Gate Boat



Peter Hickson

ROUND HAYLING ISLAND CHALLENGE

HISC X THESUPCO.COM

DUOTONE

redpaddleCO

SALCOMBE
GIN



STARBOARD
INNOVATION QUALITY

Langstone Harbour Entrance Gate Boat

1) PHOTO NEEDED



Langstone Harbour Entrance

- 1) There will be a shore team at the Ferry Boat Inn
- 2) There will be a boat – positioned approx. opposite the Ferry Boat Inn – you must pass between the boat and Hayling Island
- 3) Red flag “Gate Closed” – you must stop



Langstone - beware



© David David Potter
MarineTraffic.com

Safety.

- 1) Wear trackers and yellow vests at all times
- 2) MUD – Do Not Get Off Your Craft – it is sticky, smelly and can be dangerous
- 3) Wait – assistance will be coming
- 4) Clothing – please ensure that you are prepared for the day
- 5) Take water, munches and stuff
- 6) Shipping stay at least 500m clear – beware Langstone entrance
- 7) HISC Phone number – 02392 463768
- 8) VHF – channel 37a



Approx Start Times

- 1) 11:00 SUP, Prone
- 2) 11:10 Windsurfer (All Windsurf CATS)
- 3) 11:20 Wing Foil
- 4) 11:30 OC1, OC2 & KAYAK
- 5) 11:30 OC6 and Gigs

Start Sequence.

- 1) 3 minutes to start Horn – Red Flag raised
- 2) 2 minutes to start Horn - Red flag down – Yellow flag raised
- 3) 1 minutes to start Horn – Yellow flag down – Green flag raised
- 4) Start Horn - Green flag down.

START LINE

1) FLAGPOLE on BEACH UNDER THE RACE BOX to
NW WINNER BUOY

Beware Tide

1) 1 knot of tide = 0.5meters per second



General Recall



FINISH LINE

1) On to the east slipway – tent and welcoming team

FERRY BOAT INN – Shortened Course – RED FLAG on gate boat

Need to make own way back to the club to hand in bib and tracker

SHORTENED COURSES

- 1) RED FLAG FLYING AT GATE BOAT
- 2) DO NOT IGNORE
- 3) FOLLOW INSTRUCTIONS
- 4) THEY WILL BE NO SUPPORT IF YOU CARRY ON
- 5) APPROX *TBA* BRIDGE
- 6) APPROX *TBA* at Ferry Boat Inn – Finish on Beach

SIGNING OFF

PLEASE PLEASE

- 1) HAND IN YOUR BIB AND TRACKER AT
REGISTRATION OFFICE – AS SOON AS YOU COME
ASHORE
- 2) We cannot stand down our support boats until we
have everyone ashore

QUESTIONS ON RACE

