



2019 Tasar Class World Championship

26 July – 3 August 2019

Hayling Island Sailing Club, Hampshire, UK

SAILING INSTRUCTIONS

1 RULES

- 1.1 The regatta will be governed by the rules as defined in *The Racing Rules of Sailing*.
- 1.2 The Royal Yachting Association National Authority prescriptions that apply are stated in NoR Attachment A.
- 1.3 RRS Appendix P *Special Procedures for RRS 42* will apply.
- 1.4 Decisions of the International Jury will be final as provided in RRS 70.5.
- 1.5 In all Rules governing this regatta:
[DP] denotes a rule for which the penalty is at the discretion of the jury.
[SP] denotes a rule for which a standard penalty may be applied by the race committee without a hearing, or a discretionary penalty applied by the jury with a hearing (this changes RRS 63.1 and A5); and
[NP] denotes a rule that shall not be grounds for protest by a boat. This changes RRS 60.1(a).
- 1.6 If there is a conflict between languages the English text will take precedence.

2 COMMUNICATIONS WITH COMPETITORS

- 2.1 There will be a competitor briefing on Sunday 28 July at 11:00.
- 2.2 Notices to competitors will be posted on the official notice board, located in the race office, near the clubhouse entrance.
- 2.3 Signals made ashore will be displayed from the flag masts on the club race control box.
- 2.4 [DP][NP] Boats shall not leave the shore until flag D is displayed ashore. The warning signal will be made not less than 60 minutes after flag D is displayed (30 minutes if racing in Chichester Harbour).
- 2.5 Any change to the schedule of races will be posted by 19:00 on the day before it will take effect and any change to the sailing instructions will be posted at least 30 minutes before flag D is displayed (SI 2.4) on the day it will take effect.
- 2.6 The class flag will be the class insignia on a blue flag.

3 SCHEDULE OF RACES

- 3.1 Dates of racing:
28 July Practice race.
29 July – 3 August Championship races.
1 August is intended as a lay-day/reserve day.
- 3.2 Number of races:
A total of twelve races will be scheduled. The number of races each day, up to a maximum of three, is at the discretion of the race committee. The committee will issue a notice each day with the number of races intended.
- 3.3 The scheduled time of the warning signal for the practice race is 14:00. For the Championship races it is 12:00 for the first race each day.

- 3.4 The warning signal for each succeeding race will be made as soon as practicable.
- 3.5 To alert boats that a race will begin soon, the orange starting line flag will be displayed with one sound at least two minutes before a warning signal is made.
- 3.6 On the last scheduled day of racing no warning signal will be made after 15:00.

4 RACING AREAS

- 4.1 Attachment A shows the location of racing areas '*Alpha*', '*Bravo*' and '*Charlie*'. Racing may also take place in Chichester Harbour.
- 4.2 The area to be used will be posted each day on the official notice board.
- 4.3 **Danger Area:** The entrance to Chichester Harbour is low lying and indistinct and is flanked on either side by West Pole and East Pole Sands that extend for more than a mile offshore. The West Pole and East Pole Sands merge to form Chichester Bar a little over half a mile offshore. Ebb tides in the entrance to the harbour can run at up to six knots on springs and, with a falling tide and strong winds from a southerly sector, a dangerous sea may be encountered. At certain states of the tide, it is difficult for patrol boats to operate in the area of West Pole Sands. Boats are therefore advised to follow the marked navigation channel.

5 THE COURSES

- 5.1 The diagrams in Attachment B show the courses, the course designations, the approximate angles between legs, the order in which marks are to be passed, and the side on which each mark is to be left.
- 5.2 The gate 3s/3p may be replaced by a single mark to be left to port.
- 5.3 No later than the warning signal, the race committee signal boat will display the course designation and the approximate compass bearing of the first leg.

6 MARKS

- 6.1 Marks 1, 1a, 2, 3s and 3p will be yellow inflated cylinders.
- 6.2 Starting marks will be a race committee signal boat at the starboard end, and a boat or buoy with an orange flag at the port end.
- 6.3 Finishing marks will be a race committee boat at the starboard end, and a boat or buoy with a blue flag at the port end.

7 THE START

The starting line will be between staffs displaying orange flags on the starting marks.

8 THE FINISH

The finishing line will be between staffs displaying blue flags on the finishing marks.

9 TIME LIMITS & TARGET TIMES

- 9.1 The time limit and target time in minutes is as follows:

<i>Time limit</i>	<i>Finish window</i>	<i>Target time</i>
75	15	50

Failure to meet the target time will not be grounds for redress. This changes RRS 62.1(a).

- 9.2 Boats failing to finish within the finish window time after the first boat sails the course and finishes will be scored Did Not Finish. This changes RRS 35, A4 and A5.

10 PROTESTS, PENALTIES & REQUESTS FOR REDRESS

- 10.1 Protest forms are available at the race office. Protests and requests for redress or reopening shall be delivered there within the appropriate time limit.
- 10.2 The protest time limit is 90 minutes after the last boat has finished the last race of the day or the race committee signals no more racing today, whichever is later.
- 10.3 Notices will be posted within 30 minutes of the protest time limit to inform competitors of hearings in which they are parties or named as witnesses.

- 10.4 Notices of protests by the race committee, technical committee or jury will be posted to inform boats under RRS 61.1(b).
- 10.5 A list of boats that have been penalized under Appendix P for breaking RRS 42 and under SI 10.7 will be posted.
- 10.6 Penalties for breaches of class rules, or rules in the NoR and SIs marked [DP] or [SP] should there be a hearing, are at the discretion of the jury, and may be less than disqualification.
- 10.7 For breaches of rules marked [SP], the race committee may apply a standard penalty without a hearing of one point added to the boat's series score. However, the race committee may protest a boat if it considers the standard penalty to be inappropriate. A boat that has been penalized with a standard penalty can neither be protested for the same incident by another boat nor can another boat request redress for this race committee action. This changes RRS 60.1, 63.1 and A5.
- 10.8 On the last scheduled day of racing, a request for redress based on a jury decision shall be delivered no later than 30 minutes after the decision was posted. This changes RRS 62.2.
- 10.9 If RRS Appendix N1.4(b) applies, the time limit for requesting a hearing under that rule is 30 minutes after the party was informed of the panel's decision.

11 SCORING

- 11.1 Four races are required to be completed to constitute a series.
- 11.2 (a) When fewer than five races have been completed, a boat's series score will be the total of her race scores.
- (b) When from five to eight races have been completed, a boat's series score will be the total of her race scores excluding her worst score
- (c) When nine or more races have been completed, a boat's series score will be the total of her race scores excluding her two worst scores.
- 11.3 A boat starting later than 4 minutes after her starting signal will be scored Did Not Start. This changes rules A4 and A5.
- 11.4 To request correction of an alleged error in posted race or series results, a boat may complete a scoring enquiry form available at the race office.

12 SAFETY REGULATIONS

- 12.1 [DP][NP] Competitors shall wear personal flotation devices at all times while afloat, except briefly while adjusting clothing or personal equipment.
- 12.2 Check-out and check-in of competitors will apply as follows:
- (a) The tally control point to check-out and check-in competitors will be located at the race office.
- (b) Tallies comprise numbered rubber wristbands. Numbers will be allocated at registration, and posted on the official notice board. Tallies shall be worn visibly by all competitors, over clothing, on the right wrist, at all times while afloat.
- (c) [DP][NP][SP] Competitors shall check-out before racing by collecting their tallies.
- (d) [DP][NP][SP] Competitors shall check-in immediately on returning to shore after racing, by returning the tallies to tally control.
- 12.3 [DP][NP] A boat that retires from a race, or does not intend to start a race, shall notify the race committee as soon as possible.
- 12.4 [DP][NP] In accordance with NoR 13, boats shall return to and remain in their assigned berths whilst ashore.

13 REPLACEMENT OF CREW OR EQUIPMENT

- 13.1 [DP] Substitution of competitors will not be allowed without prior written approval of the race committee.
- 13.2 [DP] Substitution of damaged or lost equipment will not be allowed unless authorized by the technical committee. Requests for substitution shall be made to the committee at the first reasonable opportunity.

14 EQUIPMENT & MEASUREMENT CHECKS

[DP] When instructed by a member of the technical committee, a boat shall proceed as requested to a designated area for inspection. Equipment may be inspected at any time in accordance with NoR 6.2.

15 TRACKING EQUIPMENT

[DP][NP][SP] Boats shall carry tracking devices whilst racing. Competitors shall collect a tracker before racing each day, and after returning to shore shall return it, before the protest time limit, to the same place they received it.

16 OFFICIAL BOATS

Jury, technical committee and media boats will display identification.

17 SUPPORT BOATS

[DP] Support persons shall stay outside areas where boats are racing from the time of the preparatory signal for the first class to start until all boats have finished or retired or the race committee signals a postponement, general recall or abandonment.

18 TRASH DISPOSAL

Trash may be placed aboard support or official boats.

19 RADIO COMMUNICATION

[DP][NP] Except in an emergency, a boat that is racing shall not make voice or data transmissions and shall not receive voice or data communication that is not available to all boats.

20 INSURANCE

[DP][NP] Each participating boat shall be insured with valid third-party liability insurance with a minimum cover of £2million per event or the equivalent.

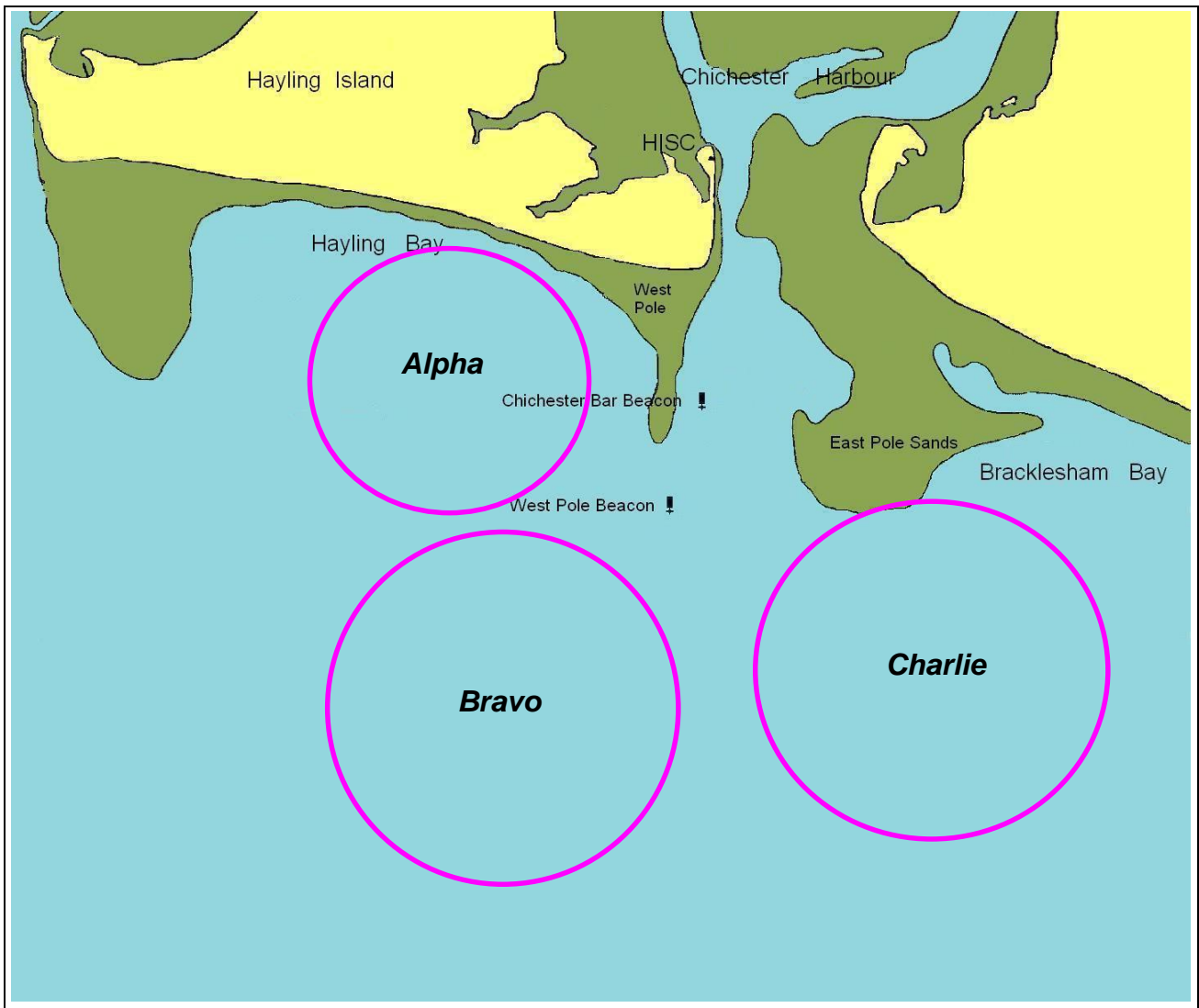
21 RISK STATEMENT

21.1 Rule 4 of the Racing Rules of Sailing states: "The responsibility for a boat's decision to participate in a race or to continue racing is hers alone."

21.2 Sailing is by its nature an unpredictable sport and therefore inherently involves an element of risk. By taking part in the event, each competitor agrees and acknowledges that:

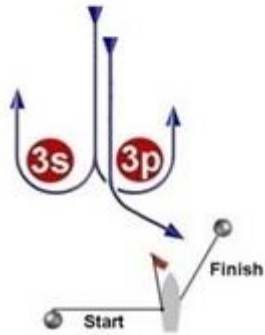
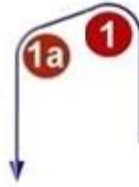
- (a) They are aware of the inherent element of risk involved in the sport and accept responsibility for the exposure of themselves, their crew and their boat to such inherent risk whilst taking part in the event;
- (b) They are responsible for the safety of themselves, their crew, their boat and their other property whether afloat or ashore;
- (c) They accept responsibility for any injury, damage or loss to the extent caused by their own actions or omission;
- (d) Their boat is in good order, equipped to sail in the event and they are fit to participate;
- (e) The provision of a race management team, patrol boats and other officials and volunteers by the event organizer does not relieve them of their own responsibilities;
- (f) The provision of patrol boat cover is limited to such assistance, particularly in extreme weather conditions, as can be practically provided in the circumstances.
- (g) It is their responsibility to familiarize themselves with any risks specific to this venue or this event drawn to their attention in any rules and information produced for the venue or event and to attend any safety briefing held for the event.

Attachment A
RACING AREAS



Attachment B
COURSE DIAGRAMS

COURSE WL: WINDWARD-LEEWARD

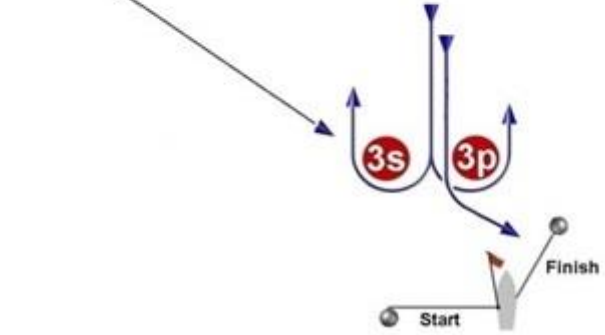
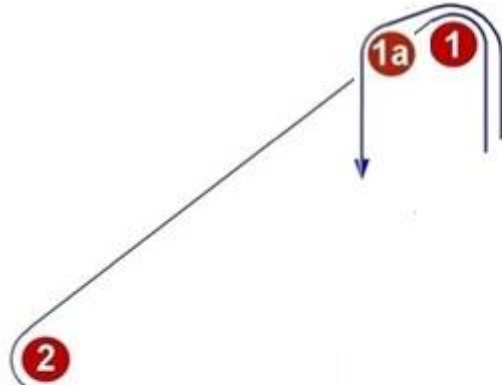


Signal: Mark rounding order:

WL2 Start - 1 - 1a - 3s/3p - 1 - 1a - 3p - Finish

WL3 Start - 1 - 1a - 3s/3p - 1 - 1a - 3s/3p - 1 - 1a - 3p - Finish

COURSE ST: WINDWARD-LEEWARD & TRIANGLE
COURSE TS: TRIANGLE & WINDWARD-LEEWARD



Signal: Mark rounding order:

ST2 Start - 1 - 1a - 3s/3p - 1 - 2 - 3p - Finish

ST3 Start - 1 - 1a - 3s/3p - 1 - 2 - 3p - 1 - 1a - 3p - Finish

TS2 Start - 1 - 2 - 3p - 1 - 1a - 3p - Finish

TS3 Start - 1 - 2 - 3p - 1 - 1a - 3s/3p - 1 - 2 - 3p - Finish