



2019 Youth Open Race Week

12 – 16 August 2019

Hayling Island Sailing Club, Hampshire, UK

SAILING INSTRUCTIONS

1 RULES

- 1.1 The regatta will be governed by the rules as defined in *The Racing Rules of Sailing*.
- 1.2 For the 29er class only, RRS 44.1 is changed so that the Two-Turns Penalty is replaced by the One-Turn Penalty.
- 1.3 RRS 41, *Outside Help*, is changed so that boats may receive help without penalty when safety is compromised.
- 1.4 In all Rules governing this regatta:
[DP] denotes a rule for which the penalty is at the discretion of the protest committee.
[NP] denotes a rule that shall not be grounds for protest by a boat. This changes RRS 60.1(a).

2 COMMUNICATION WITH COMPETITORS

- 2.1 Competitors' briefings will take place at 09:15 on Monday 12 August and 09:30 on all other days.
- 2.2 Notices to competitors will be posted on the official notice board, located in the race office, near the clubhouse entrance.
- 2.3 Signals made ashore will be displayed from the flag masts on the club race control box.
- 2.4 [DP][NP] Boats shall not leave the shore until flag D is displayed ashore. The warning signal will be made not less than 30 minutes after flag D is displayed.
- 2.5 Any change to the schedule of races will be posted by 19:00 on the day before it will take effect and any change to the sailing instructions will be posted at least 30 minutes before flag D is displayed (SI 2.4) on the day it will take effect.

3 SCHEDULE OF RACES

- 3.1 Dates of racing
Monday 12 to Friday 16 August 2019
- 3.2 A total of 12 races will be scheduled. The number of races each day, up to a maximum of three, is at the discretion of the race committee. The committee will issue a notice each day with the number of races intended.
- 3.3 The scheduled time of the warning signal for the first race each day is 10:55.
- 3.4 The warning signal for each succeeding race will be made as soon as practicable.
- 3.5 To alert boats that a race will begin soon, the orange starting line flag will be displayed with one sound at least two minutes before a warning signal is made.
- 3.6 On the last day of the regatta no warning signal will be made after 15:30.

4 CLASS FLAGS & FLEET ASSIGNMENT

4.1 Class flags will be as follows, together with the fleet to which each class is assigned:

Class:	Class Flag:	Fleet:
Optimist	Blue with Optimist	<i>Blue</i>
RS Tera Sport Gold	Green with RS Tera	
RS Tera Sport Silver	Flag T	
Youth Handicap	Yellow with Youth Handicap	
RS Feva	White with RS Feva	<i>Purple</i>
29er	Yellow with 29er	
RS 200	Red with RS200	

5 RACING AREAS

5.1 Attachment B shows the location of racing areas 'Alpha' and 'Bravo'. The area to be used will be specified in the daily briefing.

5.2 **Danger Area:** The entrance to Chichester Harbour is low lying and indistinct and is flanked on either side by West Pole and East Pole Sands that extend for more than a mile offshore. The West Pole and East Pole Sands merge to form Chichester Bar a little over half a mile offshore. Ebb tides in the entrance to the Harbour can run at up to six knots on springs and, with a falling tide and strong winds from a southerly sector, a dangerous sea may be encountered. At certain states of the tide, it is difficult for patrol boats to operate in the area of West Pole Sands. Boats are therefore advised to follow the marked navigation channel.

6 THE COURSES

6.1 The diagrams in Attachment A shows the courses, the course designations, the order in which marks are to be passed, and the side on which each mark is to be left.

6.2 The gates 3S/3P and 4S/4P may be replaced by single marks to be left to port.

6.3 Course LG & Course ST consist of a number of laps, which need not be the same for all boats. The number of laps will be determined when flag S is displayed (SI 9.2). Boats shall complete the lap that they are on when flag S is displayed.

7 MARKS

7.1 Marks 1, 1a, 2, 3 & 4 will be inflated cylinders.

7.2 Starting marks will be a race committee signal boat at the starboard end, and a boat or buoy with an orange flag at the port end.

7.3 Finishing marks (gate marks at end of a lap) will be a race committee boat at the port end, and a buoy with a blue flag at the starboard end.

8 THE START

8.1 The starting line will be between staffs displaying orange flags on the starting marks.

8.2 [DP][NP] Boats whose warning signal has not been made shall avoid the starting area during the starting sequence for other races.

8.3 A boat starting later than 4 minutes after her starting signal will be scored Did Not Start without a hearing. This changes RRS A4 and A5.

9 THE FINISH

9.1 The finishing line will be between staffs displaying blue flags on the finishing marks.

9.2 When the committee vessel at the finishing line displays flag S with two sounds, all boats will finish the race when they next pass through the finishing line, irrespective of how many laps they have completed.

9.3 The race committee may award a finishing place to a boat by pointing flag W at her with a sound. The signaled boat shall be deemed to have finished, and the score awarded shall be the position she occupied at the time of the signal. If two or more overlapped boats are signaled they shall be scored as if they were tied. This changes RRS 28.1 and A3.

10 TIME LIMITS & TARGET TIMES

- 10.1 The target time for each race is 40 minutes.
- 10.2 Boats failing to finish within 20 minutes after the first boat sails the course and finishes will be scored according to their observed position on the course, which may be the position at the end of the previous lap. This changes RRS 35, A4, and A5.

11 PROTESTS, PENALTIES & REQUESTS FOR REDRESS

- 11.1 The post-race penalty and the advisory hearing and RYA arbitration of the RYA Rules Disputes Procedures will be available. The post-race penalty will be 20% of the number of boats that came to the starting area. See the official notice board for details
- 11.2 Protest forms are available at the race office. Protests and requests for redress or reopening shall be delivered there within the appropriate time limit.
- 11.3 For each class, the protest time limit is 60 minutes after the last boat has finished the last race of the day.
- 11.4 Notices will be posted no later than 30 minutes after the protest time limit to inform competitors of hearings in which they are parties or named as witnesses.
- 11.5 Notices of protests by the race committee or protest committee will be posted to inform boats under RRS 61.1(b).
- 11.6 Penalties for breaches of class rules, or rules in the NoR and SIs marked [DP], are at the discretion of the protest committee, and may be less than disqualification.
- 11.7 On the last scheduled day of racing, a request for redress based on a protest committee decision shall be delivered no later than 30 minutes after the decision was posted. This changes RRS 62.2.

12 SCORING

- 12.1 One race is required to be completed to constitute a series.
- 12.2 Average lap times will apply to handicap fleets.
- 12.3 (a) When fewer than four races have been completed, a boat's series score will be the total of her race scores.
- (b) When from four to seven races have been completed, a boat's series score will be the total of her race scores excluding her worst score.
- (c) When from eight to ten races have been completed, a boat's series score will be the total of her race scores excluding her two worst scores.
- (d) When eleven or more races have been completed, a boat's series score will be the total of her race scores excluding her three worst scores.
- 12.4 To request correction of an alleged error in posted race or series results, a boat may complete a scoring enquiry form available at the race office.

13 SAFETY REGULATIONS

- 13.1 [DP][NP] Competitors shall wear personal flotation devices at all times while afloat, except briefly while adjusting clothing or personal equipment.
- 13.2 **Check-out and check-in.** The requirements of this SI are specified for the safety of competitors.
 - (a) The tally control point to check-out and check-in competitors will be advised in the briefing.
 - (b) Tallies comprise numbered rubber wristbands. Numbers will be allocated at registration. Tallies shall be worn visibly, over clothing, on the right wrist at all times while afloat.
 - (c) [DP][NP] Competitors shall check-out before racing by collecting their tallies.
 - (d) [DP][NP] Competitors shall check-in immediately on returning to shore after racing, by returning the tallies to tally control.

- (e) The race committee may apply a standard penalty without a hearing for a breach of (c) or (d) of this SI. The penalty will be 3 points added to the boat's series score. This changes RRS 63.1 and A5.

13.3 [DP][NP] A boat that retires from a race shall notify the race committee as soon as possible.

14 REPLACEMENT OF CREW

[DP][NP] Substitution of competitors will not be allowed without prior written approval of the race committee.

15 SUPPORT BOATS

[DP][NP] Support persons shall stay outside areas where boats are racing from the time of the preparatory signal for the first class to start until all boats have finished or retired or the race committee signals a postponement, general recall or abandonment.

16 RADIO COMMUNICATION

[DP][NP] Except in an emergency, a boat that is racing shall not make voice or data transmissions and shall not receive voice or data communication that is not available to all boats.

17 INSURANCE

[DP][NP] Each participating boat shall be insured with valid third-party liability insurance with a minimum cover of £3million per event or the equivalent.

18 RISK STATEMENT

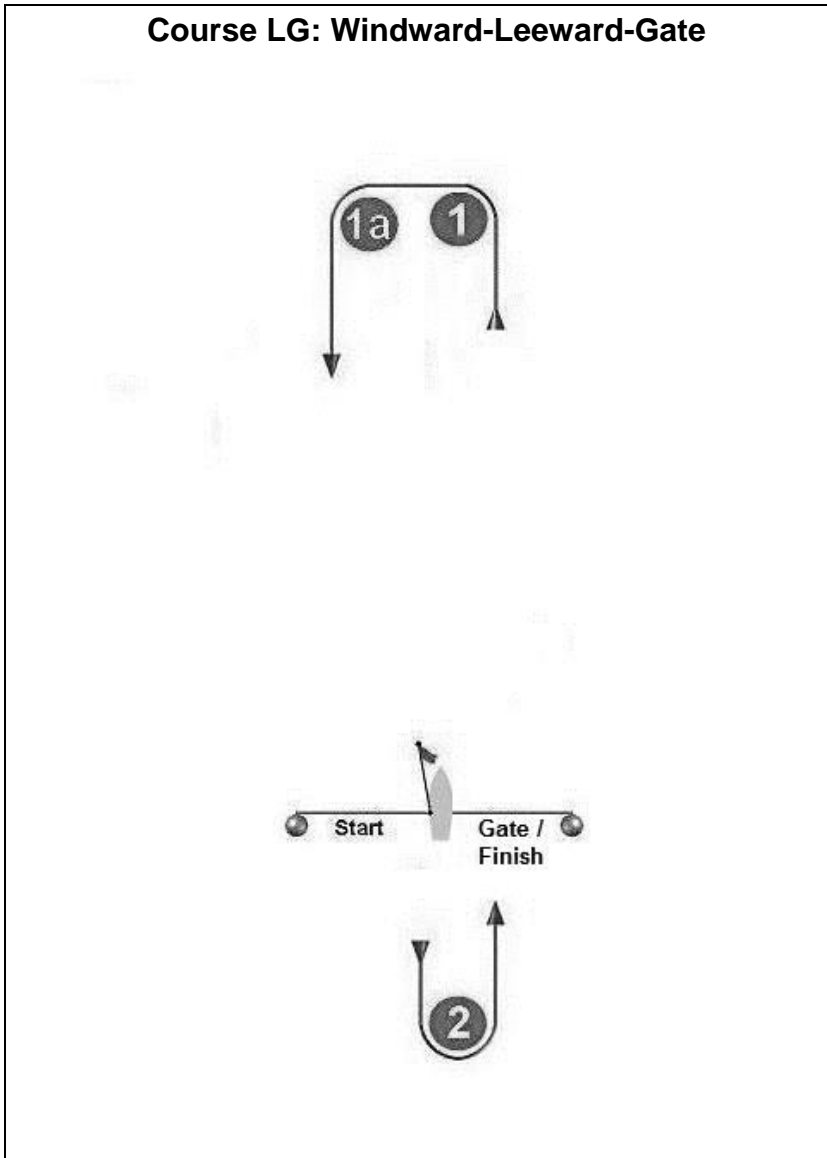
18.1 Rule 4 of the Racing Rules of Sailing states: "The responsibility for a boat's decision to participate in a race or to continue racing is hers alone."

18.2 Sailing is by its nature an unpredictable sport and therefore inherently involves an element of risk. By taking part in the event, each competitor agrees and acknowledges that:

- (a) They are aware of the inherent element of risk involved in the sport and accept responsibility for the exposure of themselves, their crew and their boat to such inherent risk whilst taking part in the event;
- (b) They are responsible for the safety of themselves, their crew, their boat and their other property whether afloat or ashore;
- (c) They accept responsibility for any injury, damage or loss to the extent caused by their own actions or omission;
- (d) Their boat is in good order, equipped to sail in the event and they are fit to participate;
- (e) The provision of a race management team, patrol boats and other officials and volunteers by the event organizer does not relieve them of their own responsibilities;
- (f) The provision of patrol boat cover is limited to such assistance, particularly in extreme weather conditions, as can be practically provided in the circumstances.
- (g) It is their responsibility to familiarize themselves with any risks specific to this venue or this event drawn to their attention in any rules and information produced for the venue or event and to attend any safety briefing held for the event.

Attachment A

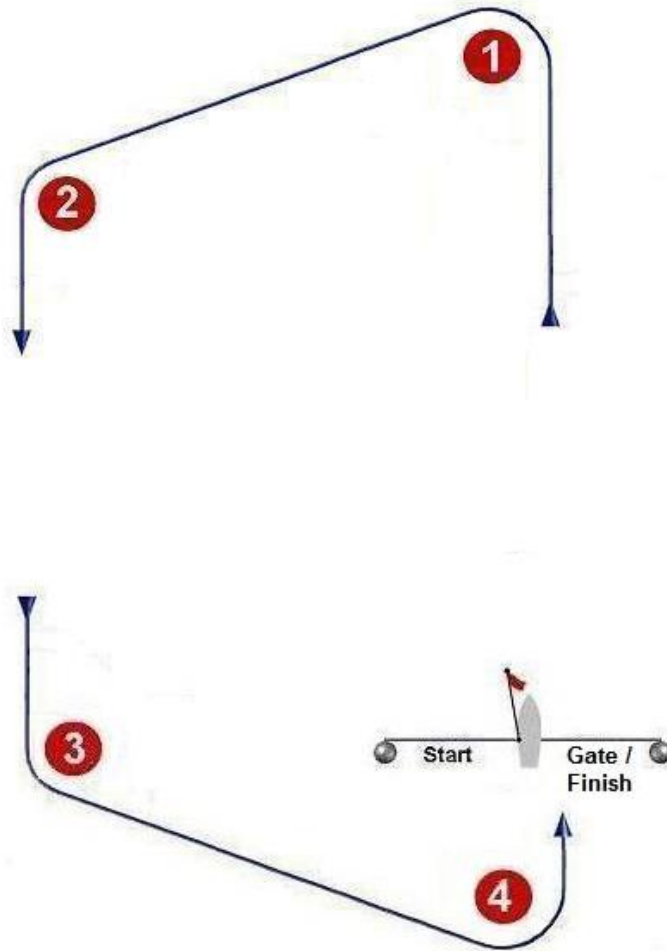
COURSE DIAGRAMS



Signal: Mark rounding order:

LG Start – 1 – 1a – 2 – Gate [Repeat till flag S is displayed]

Course ST: Simple Trapezoid

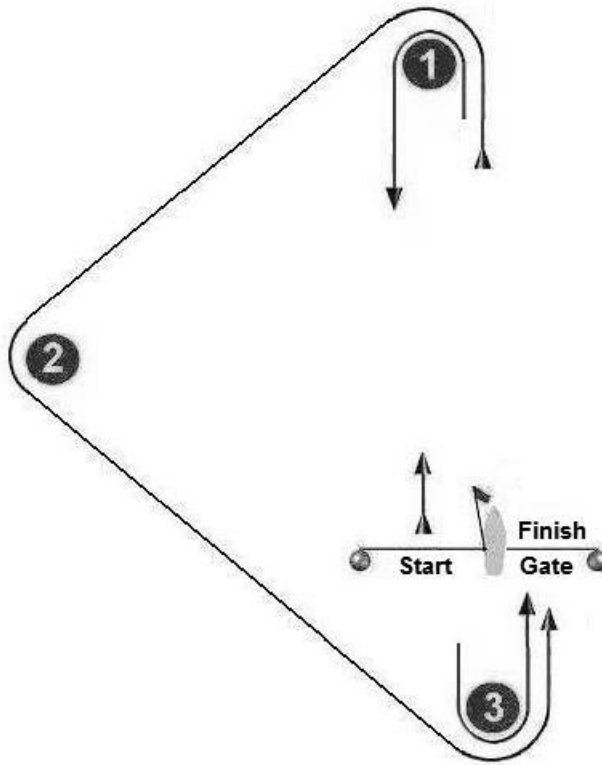


Signal: Mark rounding order:

ST1 Start – 1 – 2 – 3 – 4 – Gate [Repeat till flag S is displayed]

ST2 Start – 1 – 2 – 3 – 2 – 3 – 4 – Gate [Repeat till flag S is displayed]

Course T: Triangle



**Course
signal:**

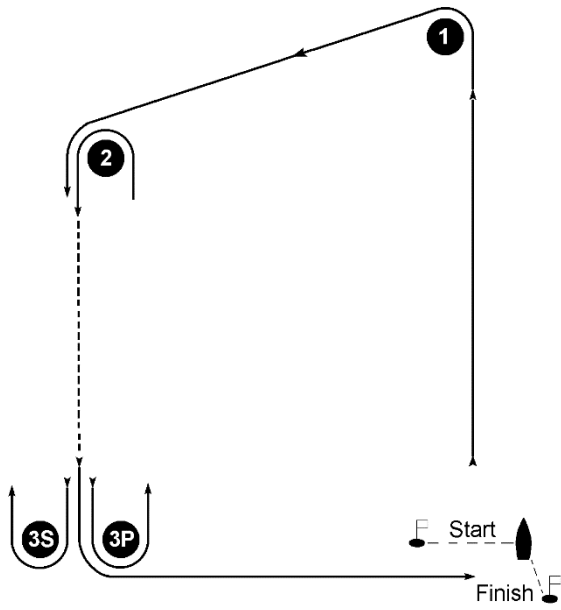
Mark rounding order:

T 1 Start – 1 – 2 – 3 – Finish

T 2 Start – 1 – 2 – 3 – Gate – 1 – 3 – Finish

T 3 Start – 1 – 2 – 3 – Gate – 1 – 3 – Gate – 1 – 2 – 3 – Finish

COURSE O: OUTER TRAPEZOID

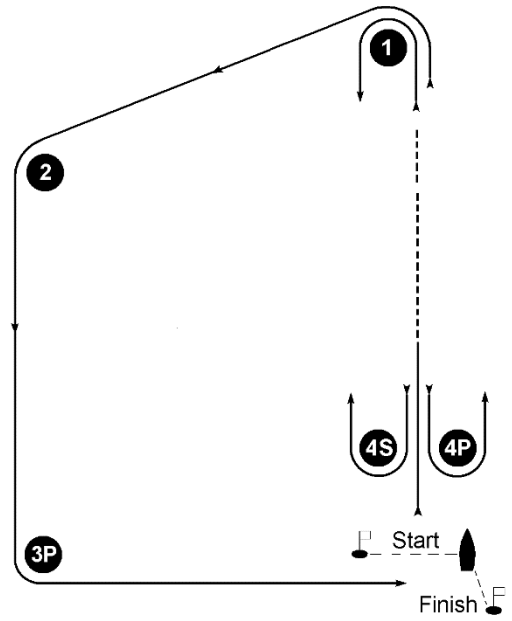


Signal Mark rounding order

O2 Start – 1 – 2 – 3s/3p – 2 – 3p – Finish

O3 Start – 1 – 2 – 3s/3p – 2 – 3s/3p – 2 – 3p – Finish

COURSE I: INNER TRAPEZOID



Signal Mark rounding order

I2 Start – 1 – 4s/4p – 1 – 2 – 3p – Finish

I3 Start – 1 – 4s/4p – 1 – 4s/4p – 1 – 2 – 3p – Finish

Attachment B
RACING AREAS

