



2017 Zhik RS Elite National Championship

19 – 22 July 2017

Hayling Island Sailing Club, Hampshire, UK

SAILING INSTRUCTIONS

1 RULES

- 1.1 The regatta will be governed by the rules as defined in The Racing Rules of Sailing.
- 1.2 The notation [DP] in a rule of the NoR or SI means that the penalty for breaching the rule is at the discretion of the protest committee.

2 COMMUNICATIONS WITH COMPETITORS

- 2.1 There will be a briefing for competitors on Wed 19 July at 19:00.
- 2.2 Notices to competitors will be posted on the official notice board, located in the race office, near the clubhouse entrance.
- 2.3 Signals made ashore will be displayed from the flag masts on the club race control box.
- 2.4 Flag D displayed ashore with a sound means: 'The warning signal will be made not less than 60 minutes after flag D is displayed'. Boats are advised not to leave the harbour until this signal is made.
- 2.5 Any change to the schedule of races will be posted by 20:00 on the day before it will take effect and any change to the sailing instructions will be posted at least 90 minutes before the scheduled warning signal of the first race affected.
- 2.6 The class flag will be Flag E.

3 SCHEDULE OF RACES

- 3.1 The race schedule is as follows:

Date:	Time of 1st warning signal & scheduled races per day:	
	Time:	# Races:
Thur 20 July	12:00	3
Fri 21 July	11:00	3
Sat 22 July	11:00	3

- 3.2 The warning signal for each succeeding race will be made as soon as practicable.
- 3.3 To alert boats that a race will begin soon, the orange starting line flag will be displayed with one sound at least five minutes before a warning signal is made.
- 3.4 On the last day of the regatta no warning signal will be made after 16:00.

4 RACING AREAS

- 4.1 Attachment A shows the location of racing areas 'Alpha', 'Bravo' and 'Charlie'.
- 4.2 The area to be used will be posted each day on the official notice board.
- 4.3 **Danger Area:** The entrance to Chichester Harbour is low lying and indistinct and is flanked on either side by West Pole and East Pole Sands that extend for more than a mile offshore. The West Pole and East Pole Sands merge to form Chichester Bar a little over half a mile

offshore. Ebb tides in the entrance to the harbour can run at up to six knots on springs and, with a falling tide and strong winds from a southerly sector, a dangerous sea may be encountered. At certain states of the tide, it is difficult for patrol boats to operate in the area of West Pole Sands. Boats are therefore advised to follow the marked navigation channel.

5 THE COURSES

- 5.1 The diagrams in Attachment B show the courses, the course designations, the approximate angles between legs, the order in which marks are to be passed, and the side on which each mark is to be left.
- 5.2 The gate 2s/2p may be replaced by a single mark to be left to port.
- 5.3 No later than the warning signal, the race committee signal boat will display the course designation and the approximate compass bearing of the first leg.
- 5.4 To change the next leg of the course, the race committee will move the original mark (or the finishing line) to a new position, or lay a new mark and remove the original mark as soon as practicable.

6 MARKS

- 6.1 Marks 1, 1a, 2s and 2p will be yellow inflated cylinders with black bands.
- 6.2 New marks, as provided in SI 5.4, will be of the same shape and colour as the original marks.
- 6.3 Starting marks will be a race committee signal boat at the starboard end, and a boat or buoy with an orange flag at the port end.
- 6.4 Finishing marks will be a race committee boat and a buoy with a blue flag.

7 THE START

The starting line will be between staffs displaying orange flags on the starting marks.

8 THE FINISH

The finishing line will be between staffs displaying blue flags on the finishing marks.

9 TIME LIMITS & TARGET TIMES

- 9.1 The time limit and target time in minutes is as follows:

<i>Time limit</i>	<i>Finish window</i>	<i>Target time</i>
90	15	45

Failure to meet the target time will not be grounds for redress. This changes RRS 62.1(a).

- 9.2 Boats failing to finish within the finish window time after the first boat sails the course and finishes will be scored Did Not Finish. This changes RRS 35, A4 and A5.

10 PROTESTS, PENALTIES & REQUESTS FOR REDRESS

- 10.1 Protest forms are available at the race office. Protests and requests for redress or reopening shall be delivered there within the appropriate time limit.
- 10.2 The protest time limit is 120 minutes after the last boat has finished the last race of the day or the race committee signals no more racing today, whichever is later.
- 10.3 Notices will be posted no later than 30 minutes after the protest time limit to inform competitors of hearings in which they are parties or named as witnesses.
- 10.4 Notices of protests by the race committee, technical committee or protest committee will be posted to inform boats under RRS 61.1(b).
- 10.5 Penalties for breaches of class rules, RRS 55 or rules in the NoR and SIs marked [DP], are at the discretion of the protest committee.
- 10.6 Breaches of SI 12, Safety Regulations, will not be grounds for protest by a boat. This changes RRS 60.1(a).

10.7 On the last scheduled day of racing, a request for redress based on a protest committee decision shall be delivered no later than 30 minutes after the decision was posted. This changes RRS 62.2.

11 SCORING

11.1 Four races are required to be completed to constitute a series.

11.2 (a) When fewer than four races have been completed, a boat's series score will be the total of her race scores.

(b) When from four to eight races have been completed, a boat's series score will be the total of her race scores excluding her worst score

(c) When nine races have been completed, a boat's series score will be the total of her race scores excluding her two worst scores.

11.3 A boat starting later than 4 minutes after her starting signal will be scored Did Not Start. This changes RRS A4 and A5.

11.4 To request correction of an alleged error in posted race or series results, a boat may complete a scoring enquiry form available at the race office.

12 SAFETY REGULATIONS

12.1 Competitors are advised to wear personal flotation devices at all times while afloat, except briefly while adjusting clothing or personal equipment.

12.2 [DP] A boat that retires from a race, or does not intend to start a race, shall notify the race committee as soon as possible.

13 REPLACEMENT OF CREW OR EQUIPMENT

13.1 [DP] Substitution of competitors will not be allowed without prior written approval of the race committee.

13.2 [DP] Substitution of damaged or lost equipment will not be allowed unless approved by the race committee. Requests for substitution shall be made to the committee at the first reasonable opportunity.

14 EQUIPMENT & MEASUREMENT CHECKS

In accordance with NoR 6, a boat or equipment may be inspected at any time for compliance with the class rules and sailing instructions. On the water, a boat can be instructed by a member of the race committee or the technical committee to proceed immediately to a designated area for inspection.

15 EVENT ADVERTISING

[DP] Boats shall display event advertising supplied by the organizing authority. Decals will be issued for attachment to both sides of the hull.

16 SUPPORT BOATS

[DP] Team leaders, coaches and other support persons shall stay outside areas where boats are racing from the time of the preparatory signal until all boats have finished or retired or the race committee signals a postponement, general recall or abandonment.

17 BERTHING & HAUL-OUT RESTRICTIONS

17.2 [DP] Boats shall be kept in their allocated berths whilst in the harbour.

17.3 [DP] Boats shall not be hauled out during the championship except with and according to the terms of prior written permission of the race committee.

18 RADIO COMMUNICATION

18.1 VHF Channel 37(M) may be used by the race committee to convey information to boats, including notification of boats penalized under RRS 30 (*Starting Penalties*).

18.2 VHF Channel 37(M) may be used by competitors to notify retirement (see SI 12.2).

18.3 Other than as above, or in an emergency, a boat that is racing shall not make voice or data transmissions and shall not receive voice or data communication that is not available to all boats.

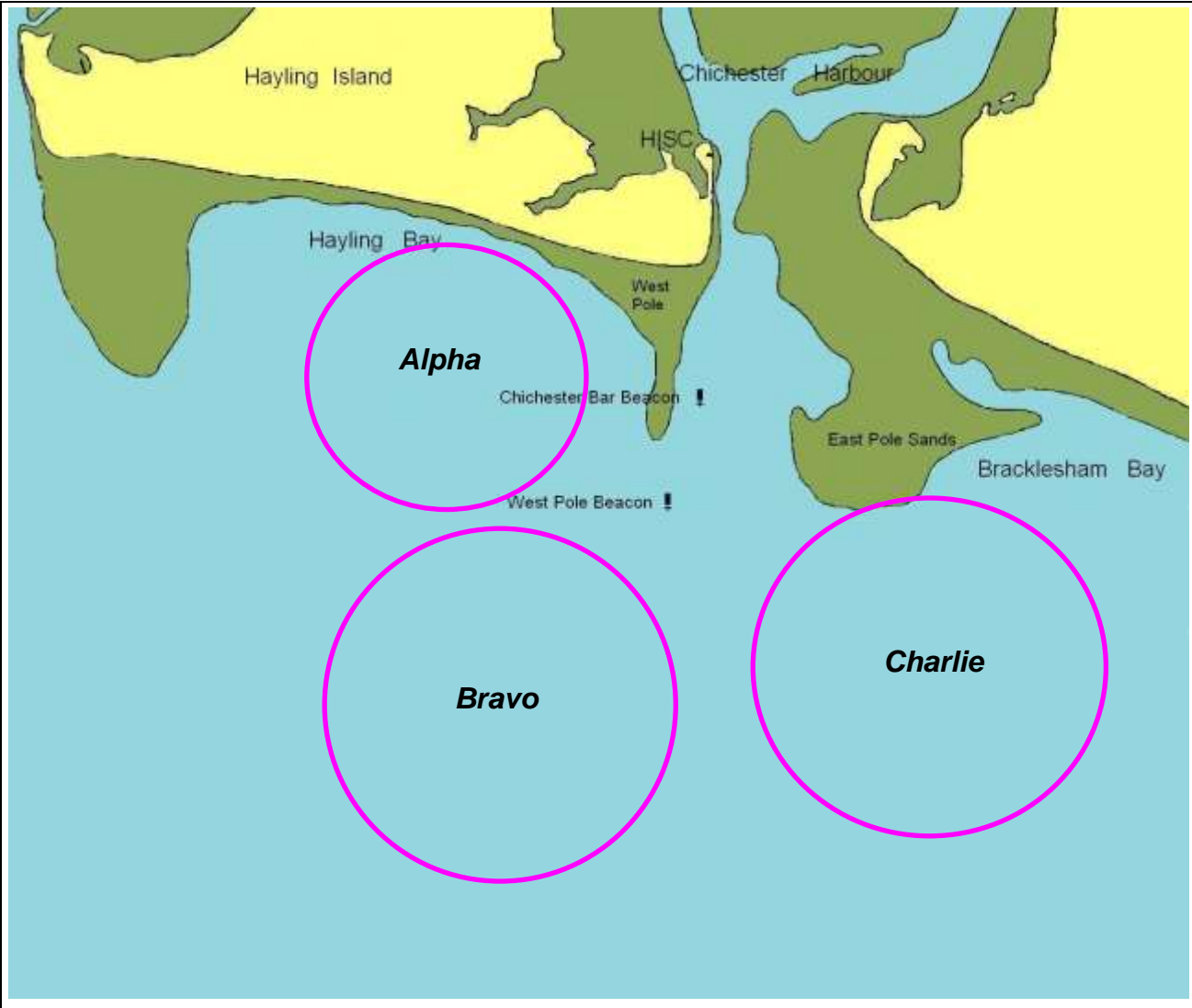
19 RISK STATEMENT

19.1 Rule 4 of the Racing Rules of Sailing states: "The responsibility for a boat's decision to participate in a race or to continue racing is hers alone."

19.2 Sailing is by its nature an unpredictable sport and therefore inherently involves an element of risk. By taking part in the event, each competitor agrees and acknowledges that:

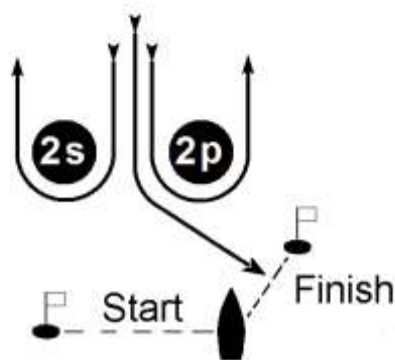
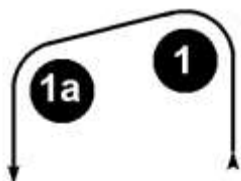
- (a) They are aware of the inherent element of risk involved in the sport and accept responsibility for the exposure of themselves, their crew and their boat to such inherent risk whilst taking part in the event;
- (b) They are responsible for the safety of themselves, their crew, their boat and their other property whether afloat or ashore;
- (c) They accept responsibility for any injury, damage or loss to the extent caused by their own actions or omission;
- (d) Their boat is in good order, equipped to sail in the event and they are fit to participate;
- (e) The provision of a race management team, patrol boats and other officials and volunteers by the event organizer does not relieve them of their own responsibilities;
- (f) The provision of patrol boat cover is limited to such assistance, particularly in extreme weather conditions, as can be practically provided in the circumstances.
- (g) It is their responsibility to familiarize themselves with any risks specific to this venue or this event drawn to their attention in any rules and information produced for the venue or event and to attend any safety briefing held for the event.
- (h) Their boat is adequately insured, with cover of at least £2 million against third-party claims, or the equivalent in other currencies.

**Attachment A
RACING AREAS**



Attachment B
COURSE DIAGRAMS

COURSE L: WINDWARD - LEEWARD



Signal **Mark rounding order**

L2 **Start – 1 – 1a – 2s/2p – 1 – 1a – 2p – Finish**

L3 **Start – 1 – 1a – 2s/2p – 1 – 1a – 2s/2p – 1 – 1a – 2p – Finish**