

Open Regatta:
Flying 15 Class for the Bulwark Trophy
Flying 15 (Classic) for the Fflisk Salver
Contender Class
Fireball Class

19 & 20 June 2010

Hayling Island Sailing Club

Organizing Authority: Hayling Island Sailing Club

SAILING INSTRUCTIONS

1 RULES

The regatta will be governed by the rules as defined in *The Racing Rules of Sailing*.

2 NOTICES TO COMPETITORS

Notices to competitors will be posted on the official notice board, located in the race office, near the clubhouse entrance.

3 CHANGES TO SAILING INSTRUCTIONS

Any change to the sailing instructions will be posted at least 60 minutes before flag D is displayed (instruction 4.2) on the day it will take effect, except that any change to the schedule of races will be posted by 19:00 on the day before it will take effect.

4 SIGNALS MADE ASHORE

4.1 Signals made ashore will be displayed from the flag masts on the club race control box.

4.2 Flag D with a sound means: 'The warning signal will be made not less than 60 minutes after flag D is displayed (40 minutes when racing in Chichester Harbour)'. Boats are requested not to leave the harbour until this signal is made.

5 SCHEDULE OF RACES

5.1 Dates of racing: 19 & 20 June 2010.

5.2 Number of races:

Flying 15 & Classic Flying 15 4 races (maximum of 3 races on any day)

Other classes 6 races (maximum of 4 races on any day)

5.3 The scheduled time of the warning signal for the first race on 19 June is 12:55, and on 20 June is 10:55.

5.4 To alert boats that a race or sequence of races will begin soon, an orange flag will be displayed with one sound for at least four minutes before a warning signal is displayed.

5.5 On the last day of the regatta no warning signal will be made after 15:00.

6 CLASS FLAGS

Class flags will be:

Class: **Flag:**

Flying 15 Naval Numeral 6

Fireball Pennant 8

Contender Flag C

7 RACING AREAS

Attachment A shows the location of racing areas A and B. Flag D (instruction 4.2) will be displayed over flag A or B and the class flag, to signal the intended area for each class.

8 THE COURSES

- 8.1 The diagrams in Attachment B shows the courses, including the course signals, approximate angles between legs, the order in which marks are to be passed, and the side on which each mark is to be left.
- 8.2 No later than the warning signal, the race committee signal boat will display the approximate compass bearing of the first leg.

9 MARKS

- 9.1 Marks 1, 2 and 3 will be inflated cylindrical buoys, colour as follows:

Flying 15	Black
Fireball & Contender	Yellow

- 9.2 New marks, as provided in instruction 11 will be of the same shape and colour as the original marks.
- 9.3 Starting marks will be a race committee signal boat at the starboard end, and a boat or buoy with an orange flag at the port end.
- 9.4 Finishing marks will be a race committee boat, and a buoy with a blue flag.

10 THE START

- 10.1 The starting line will be between staffs displaying orange flags on the starting marks.
- 10.2 Boats whose warning signal has not been made shall avoid the starting area during the starting sequence for other races.
- 10.3 A boat starting later than 4 minutes after her starting signal will be scored Did Not Start without a hearing. This changes rules A4 and A5.

11 CHANGE OF THE NEXT LEG OF THE COURSE

To change the next leg of the course, the race committee will move the original mark (or the finishing line) to a new position, or lay a new mark and remove the original mark as soon as practicable.

12 THE FINISH

The finishing line will be between staffs displaying blue flags on the finishing marks.

13 TIME LIMITS & TARGET TIMES

- 13.1 The time limit and target time in minutes is as follows:

<i>Class</i>	<i>Time limit</i>	<i>Target time</i>
Flying 15	120	70
Fireball & Contender	75	50

Failure to meet the target time will not be grounds for redress. This changes rule 62.1(a).

- 13.2 Boats failing to finish within 20 minutes after the first boat sails the course and finishes will be scored Did Not Finish without a hearing. This changes rules 35, A4 and A5.

14 PROTESTS & REQUESTS FOR REDRESS

- 14.1 Protest forms are available at the race office. Protests and requests for redress or reopening shall be delivered there within the appropriate time limit.
- 14.2 For each class, the protest time limit is 90 minutes after the last boat has finished the last race of the day.

- 14.3 Notices will be posted no later than 30 minutes after the protest time limit to inform competitors of hearings in which they are parties or named as witnesses.
- 14.4 Notices of protests by the race committee or protest committee will be posted to inform boats under rule 61.1(b).
- 14.5 Breaches of instructions 4.2, 10.2, 16, 17, 18, and 19 will not be grounds for protest by a boat. This changes rule 60.1(a). Penalties for these breaches may be less than disqualification if the protest committee so decides. The scoring abbreviation for a discretionary penalty imposed under this instruction will be DPI.
- 14.6 On the last scheduled day of racing a request for reopening a hearing shall be delivered:
- (a) within the protest time limit if the requesting party was informed of the decision on the previous day.
 - (b) no later than 30 minutes after the requesting party was informed of the decision on that day.
- This changes rule 66.
- 14.7 On the last scheduled day of racing, a request for redress based on a protest committee decision shall be delivered no later than 30 minutes after the decision was posted. This changes rule 62.2.

15 SCORING

- 15.1 One race is required to be completed to constitute a series.
- 15.2 (a) When fewer than four races (three for Flying 15) have been completed, a boat's series score will be the total of her race scores.
- (b) When four races (three for Flying 15) or more have been completed, a boat's series score will be the total of her race scores excluding her worst score.
- 15.3 To request correction of an alleged error in posted race or series results, a boat may complete a scoring enquiry form available at the race office.

16 SAFETY REGULATIONS

- 16.1 Competitors shall wear personal flotation devices adequate for the conditions at all times while racing. Flag Y will not be displayed. This changes rule 40.
- 16.2 **Check-out and check-in.** The requirements of this instruction are specified for the safety of competitors.
- (a) The tally control point to check-out and check-in competitors will be located at the race office.
 - (b) Tallies comprise numbered rubber wristbands. Numbers will be allocated at registration, and posted on the official notice board. Tallies shall be worn visibly, over clothing, on the right wrist at all times while afloat.
 - (c) Competitors shall check-out before racing by collecting their tallies.
 - (d) Competitors shall check-in immediately on returning to shore after racing, by returning the tallies to tally control.
 - (e) Boats whose crews fail to comply may accept an alternative penalty for a first infringement by making a donation of £10 to the local RNLI. Otherwise the penalty will be 5 points added to the boat's series score without a hearing for each infringement. A list of boats that have infringed will be posted on the official notice board before the protest time limit. This changes rule 63.1.
- 16.3 A boat that retires from a race shall notify the race committee as soon as possible.
- 16.4 **Danger Area:** The entrance to Chichester Harbour is low lying and indistinct and is flanked on either side by West Pole and East Pole Sands that extend for more than a mile offshore.

The West Pole and East Pole Sands merge to form Chichester Bar a little over half a mile offshore. Ebb tides in the entrance to the harbour can run at up to six knots on springs and, with a falling tide and strong winds from a southerly sector, a dangerous sea may be encountered. At certain states of the tide, it is difficult for patrol boats to operate in the area of West Pole Sands. Boats are therefore advised to pass the West Pole Beacon and the Bar Beacon close to starboard on the way out to the racing area and, on returning, to leave both beacons to port.

17 SUPPORT BOATS

Team leaders, coaches and other support personnel shall stay outside areas where boats are racing from the time of the preparatory signal for the first class to start until all boats have finished or retired or the race committee signals a postponement, general recall or abandonment.

18 TRASH DISPOSAL

Boats shall not put trash in the water. Trash may be placed aboard support and race committee boats.

19 RADIO COMMUNICATION

Except in an emergency, a boat shall neither make radio transmissions while racing nor receive radio communications not available to all boats. This restriction also applies to mobile telephones.

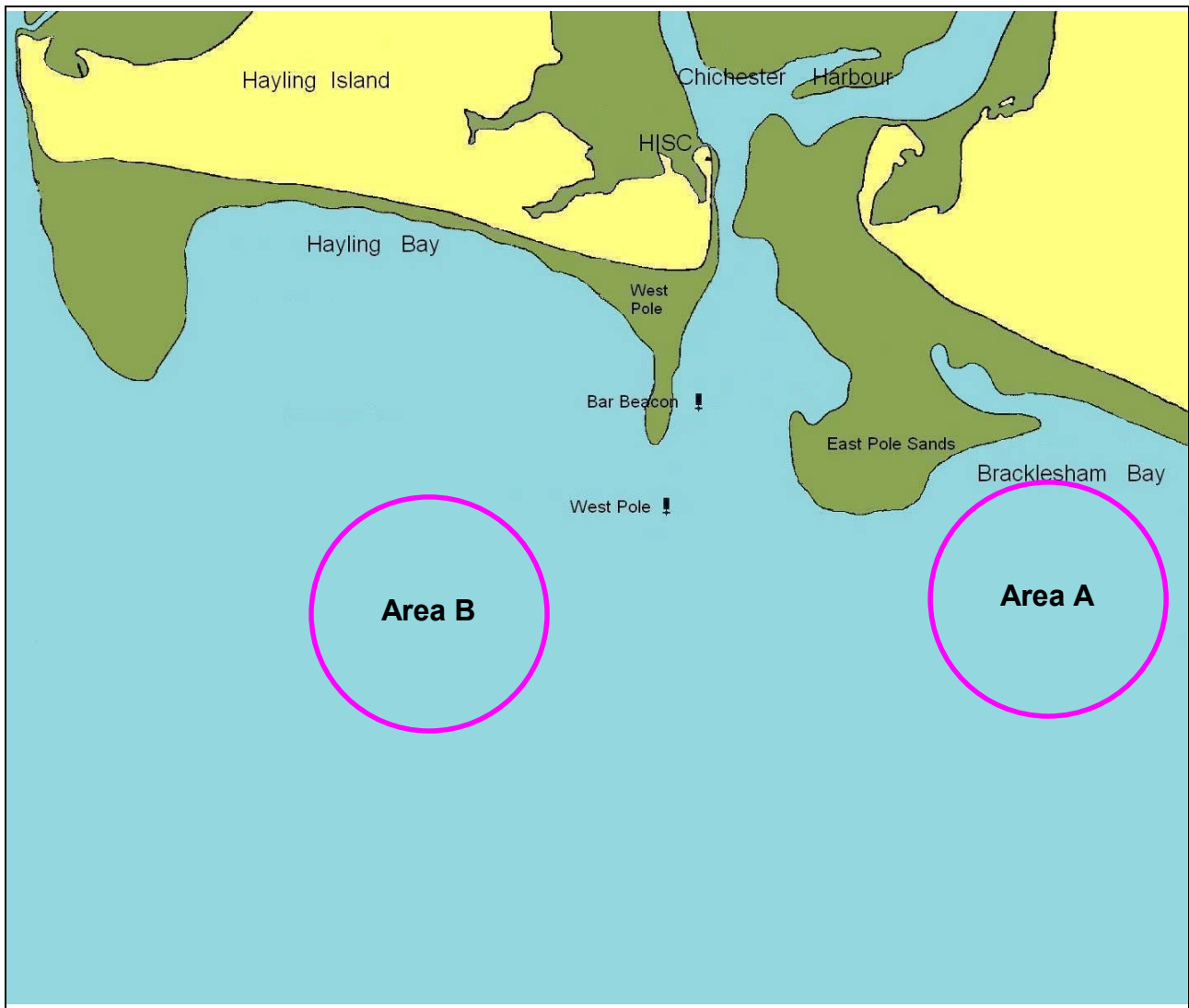
20 DISCLAIMER OF LIABILITY

Competitors participate in the regatta entirely at their own risk. See rule 4, Decision to Race. The organizing authority will not accept any liability for material damage or personal injury or death sustained in conjunction with or prior to, during, or after the regatta.

21 INSURANCE

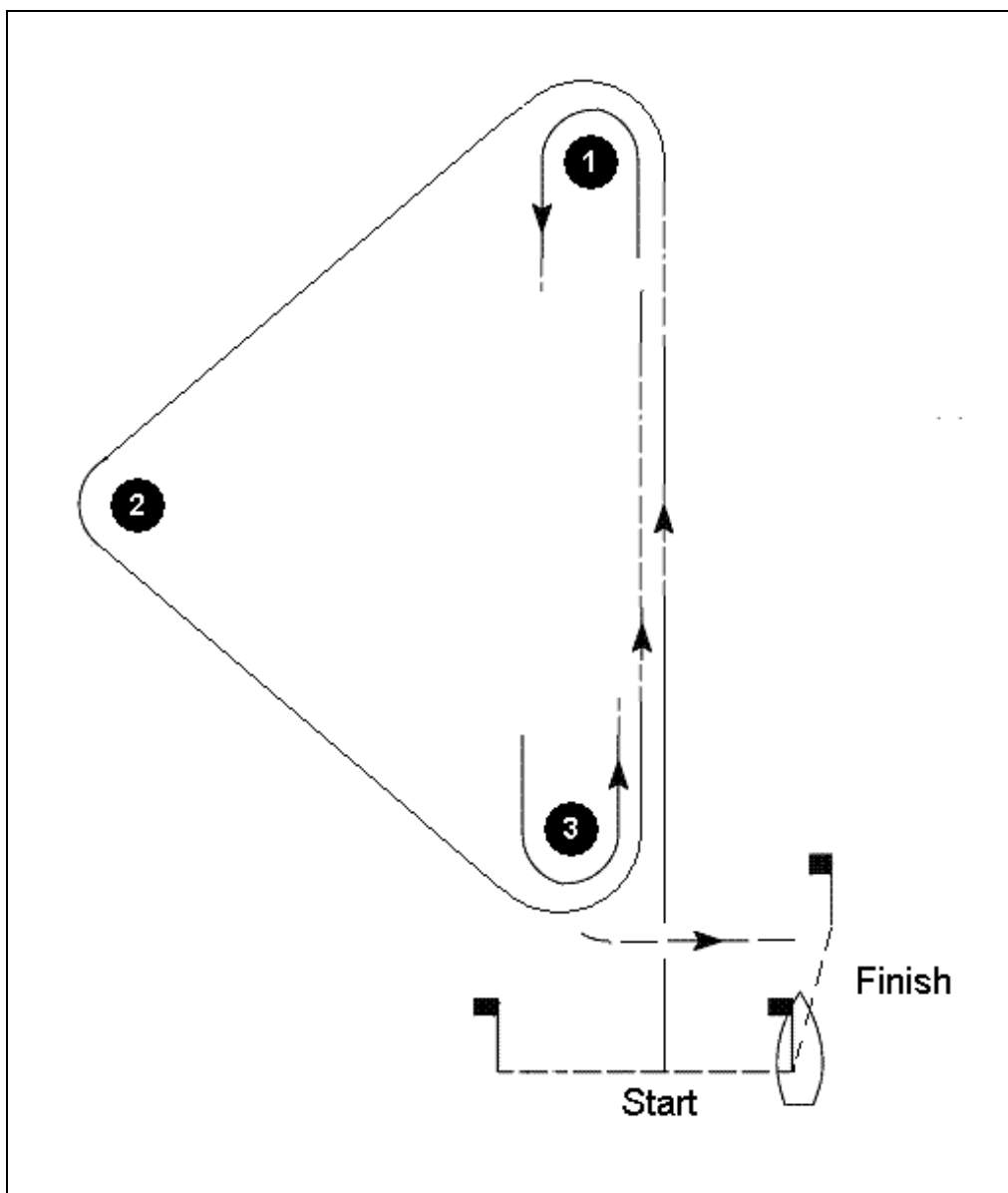
Each participating boat shall be insured with valid third-party liability insurance with a minimum cover of £2million per event or the equivalent.

Attachment A
RACING AREAS



Attachment B

TRIANGULAR & WINDWARD/LEEWARD COURSE DIAGRAM



Course signal:	Mark rounding order:
T1	Start – 1 – 2 – 3 – Finish
T2	Start – 1 – 2 – 3 – 1 – 3 – Finish
T3	Start – 1 – 2 – 3 – 1 – 3 – 1 – 2 – 3 – Finish
L1	Start – 1 – 3 – Finish
L2	Start – 1 – 3 – 1 – 3 – Finish
L3	Start – 1 – 3 – 1 – 3 – 1 – 3 – Finish