

2010

Sekonda RS Feva UK National Championship

29 – 31 May 2010

Hayling Island Sailing Club

*Organizing Authority: Hayling Island Sailing Club
in conjunction with the RS Class Association*

SAILING INSTRUCTIONS

1 RULES

The regatta will be governed by the rules as defined in *The Racing Rules of Sailing*.

2 ADDITIONAL IDENTIFICATION

Boats shall display a coloured sticker corresponding to the fleet to which she has been assigned (see instruction 6.2(a)). The organizing authority will supply the stickers, which shall be attached to both sides of the mainsail, above the top batten.

3 NOTICES TO COMPETITORS

Notices to competitors will be posted on the official notice board, located in the race office, near the clubhouse entrance.

4 CHANGES TO SAILING INSTRUCTIONS

Any change to the sailing instructions will be posted at least 60 minutes before flag D is displayed (instruction 5.2) on the day it will take effect, except that any change to the schedule of races will be posted by 19:00 on the day before it will take effect.

5 SIGNALS MADE ASHORE

5.1 Signals made ashore will be displayed from the flag masts on the club race control box.

5.2 Flag D with a sound means: 'The warning signal will be made not less than 60 minutes after flag D is displayed'. Boats shall not launch until this signal is made.

6 FORMAT OF RACING

6.1 The regatta will consist of a qualifying series and a final series.

6.2 Qualifying Series:

(a) For the qualifying series boats will be assigned to fleets Yellow, Blue, Red, Green, of, as nearly as possible, equal size and ability. Assignments will be made by a seeding committee appointed by the organizing authority, and posted by 10:00 on the first day of racing.

(b) Fleets will race with each other in rotation as follows:

Race:	First Start:	Second Start:
1	Yellow & Green	Red & Blue
2	Yellow & Red	Green & Blue
3	Yellow & Blue	Green & Red

6.3 Final Series:

(a) Boats will be assigned to final series fleets Gold and Silver, on the basis of their ranks in the qualifying series. The final series fleets will have, as nearly as possible, equal size, but the Silver fleet will not be larger than the Gold fleet. Boats with the best qualifying-series ranks will race all final-series races in the Gold fleet; boats with the next-best qualifying-series ranks will race in the Silver fleet.

- (b) Any recalculation of qualifying series ranking after boats have been assigned to final series fleets will not affect the assignments except that a redress decision may promote a boat to a higher fleet.

7 SCHEDULE OF RACES

Date:	Races:
Sat 29 May	Qualifying series – 3 races
Sun 30 May	Final series – 3 races
Mon 31 May	Final series – 3 races

- 7.1 The scheduled time of the warning signal for the first race on 29 May is 13:00, and on other days is 11:00.
- 7.2 To alert boats that a race or sequence of races will begin soon, an orange flag will be displayed with one sound at least four minutes before a warning signal is displayed.
- 7.3 On the last day of the regatta no warning signal will be made after 15:00.

8 CLASS FLAGS

- 8.1 The class flag will be the class insignia on a purple & grey background.
- 8.2 Qualifying fleets will use coloured flags denoting the fleet colour (Yellow, Blue, Red, Green). Warning signals will be the two flags of the fleets racing together.
- 8.3 Finals fleets will use Yellow flag (gold fleet) and Blue flag (silver fleet).

9 RACING AREA

Attachment A shows the location of racing areas A, B, and C. Flag D (instruction 5.2) will be displayed over flag A, B, or C, to signal the intended area.

10 THE COURSES

- 10.1 The diagrams in Attachment B show the courses, including the course signals, approximate angles between legs, the order in which marks are to be passed, and the side on which each mark is to be left.
- 10.2 Mark 3 is shown as a gate, 3s and 3p, and Mark 4 is shown as a gate, 4s and 4p. One or both gates may be replaced by single marks, Mark 3 and Mark 4 respectively, to be left to port. When there is a gate, boats shall sail between the gate marks from the direction of the previous mark and round either gate mark.
- 10.3 No later than the warning signal, the race committee signal boat will display the approximate compass bearing of the first leg.

11 MARKS

- 11.1 Marks will be inflated cylindrical buoys, coloured as follows:
- | | |
|-----------------------|--------|
| Marks 1, 2 & 5 | Black |
| Marks 3S, 3P, 4S & 4P | Yellow |
- 11.2 New marks, as provided in instruction 13, will be of the same shape and colour as the original marks.
- 11.3 Starting marks will be a race committee signal boat at the starboard end, and a boat or buoy with an orange flag at the port end.
- 11.4 Finishing marks will be a race committee boat at the port end, and a boat or buoy with a blue flag at the starboard end.

12 THE START

- 12.1 The starting line will be between staffs displaying orange flags on the starting marks.
- 12.2 Boats whose warning signal has not been made shall avoid the starting area during the starting sequence for other races.

12.3 A boat starting later than 4 minutes after her starting signal will be scored Did Not Start without a hearing. This changes rules A4 and A5.

13 CHANGE OF THE NEXT LEG OF THE COURSE

To change the next leg of the course, the race committee will move the original mark (or the finishing line) to a new position, or lay a new mark and remove the original mark as soon as practicable.

14 THE FINISH

The finishing line will be between staffs displaying blue flags on the finishing marks.

15 PENALTY SYSTEM

15.1 Rule 44.1 is changed so that the Two-Turns Penalty is replaced by the One-Turn Penalty.

15.2 Appendix P will apply as changed by instruction 15.1.

15.3 Rules P2.2 and P2.3 will not apply and rule P2.1 will apply to all penalties.

16 TIME LIMITS & TARGET TIMES

16.1 The time limit and target time in minutes is as follows:

<i>Time limit:</i>	<i>Mark 1 time limit:</i>	<i>Target time:</i>
60	20	40

If no boat has passed Mark 1 within the Mark 1 time limit the race will be abandoned. Failure to meet the target time will not be grounds for redress. This changes rule 62.1(a).

16.2 Boats failing to finish within 15 minutes after the first boat sails the course and finishes will be scored according to their observed positions on the course, which may be the position at the last mark rounded. This changes rules 35, A4 and A5.

17 PROTESTS & REQUESTS FOR REDRESS

17.1 The Exoneration Penalty and the Advisory Hearing and RYA Arbitration procedures of the RYA Rules Disputes Procedures will be available. See the Official Notice Board for details.

17.2 Protest forms are available at the race office. Protests and requests for redress or reopening shall be delivered there within the appropriate time limit.

17.3 The protest time limit is 90 minutes after the last boat has finished the last race of the day.

17.4 Notices will be posted no later than 30 minutes after the protest time limit to inform competitors of hearings in which they are parties or named as witnesses.

17.5 Notices of protests by the race committee or protest committee will be posted to inform boats under rule 61.1(b).

17.6 A list of boats that, under instruction 15.2, have been penalized for breaking rule 42 will be posted.

17.7 Breaches of instructions 5.2, 12.2, 19, 20, 22, 23, 24, 25 and 26 will not be grounds for protest by a boat. This changes rule 60.1(a). Penalties for these breaches may be less than disqualification if the protest committee so decides. The scoring abbreviation for a discretionary penalty imposed under this instruction will be DPI.

17.8 On the last scheduled day of racing a request for reopening a hearing shall be delivered:

(a) within the protest time limit if the requesting party was informed of the decision on the previous day.

(b) no later than 30 minutes after the requesting party was informed of the decision on that day.

This changes rule 66.

17.9 On the last scheduled day of racing, a request for redress based on a protest committee decision shall be delivered no later than 30 minutes after the decision was posted. This changes rule 62.2.

18 SCORING

18.1 A minimum of three races is required to be completed by each fleet to constitute a qualifying series. If three races are not completed as scheduled, the qualifying series will be extended to complete them.

18.2 One qualifying race is required to be completed by all fleets to constitute a regatta.

18.3 If at the end of the qualifying series some boats have more race scores than others, scores for the most recent races will be excluded so that all boats have the same number of race scores.

18.4 For the qualifying series, rule A4.2 is changed so that the scores are based on the number of boats assigned to the largest fleet.

18.5 Except for race scores excluded under instruction 18.7, a boat's regatta score will be the total of her race scores from her final-series races plus points equal to her qualifying-series rank.

18.6 Each final series fleet will be scored separately. Different final series fleets need not have completed the same number of final races. The boats in the Gold fleet will be ranked highest, etc.

18.7 Series scores (apply separately to qualifying and final series):

(a) When fewer than three races have been completed, a boat's series score will be the total of her race scores.

(b) When three or more races have been completed, a boat's series score will be the total of her race scores excluding her worst score.

18.8 To request correction of an alleged error in posted race or series results, a boat may complete a scoring enquiry form available at the race office.

19 SAFETY REGULATIONS

19.1 Competitors shall wear personal flotation devices adequate for the conditions at all times while racing. Flag Y will not be displayed. This changes rule 40.

19.2 **Check-out and check-in.** The requirements of this instruction are specified for the safety of competitors.

(a) The tally control point to check-out and check-in competitors will be located at the race office.

(b) Tallies comprise numbered rubber wristbands. Numbers will be allocated at registration, and posted on the official notice board. Tallies shall be worn visibly, over clothing, on the right wrist at all times while afloat.

(c) Competitors shall check-out before racing by collecting their tallies.

(d) Competitors shall check-in immediately on returning to shore after racing, by returning the tallies to tally control.

(e) The penalty for failure to comply with this instruction will be 5 points added to the boat's series score without a hearing for each infringement. A list of boats that have infringed will be posted on the official notice board before the protest time limit. This changes rule 63.1.

19.3 A boat that retires from a race shall notify the race committee as soon as possible.

19.4 **Danger Area:** The entrance to Chichester Harbour is low lying and indistinct and is flanked on either side by West Pole and East Pole Sands that extend for more than a mile offshore. The West Pole and East Pole Sands merge to form Chichester Bar a little over half a mile

offshore. Ebb tides in the entrance to the harbour can run at up to six knots on springs and, with a falling tide and strong winds from a southerly sector, a dangerous sea may be encountered. At certain states of the tide, it is difficult for patrol boats to operate in the area of West Pole Sands. Boats are therefore advised to pass the West Pole Beacon and the Bar Beacon close to starboard on the way out to the racing area and, on returning, to leave both beacons to port.

20 REPLACEMENT OF CREW OR EQUIPMENT

- 20.1 Substitution of competitors will not be allowed without prior written approval of the race committee.
- 20.2 Substitution of damaged or lost equipment will not be allowed unless approved by the race committee. Requests for substitution shall be made to the committee at the first reasonable opportunity.

21 EQUIPMENT & MEASUREMENT CHECKS

A boat or equipment may be inspected at any time for compliance with the class rules and sailing instructions. On the water, a boat can be instructed by a race committee equipment inspector or measurer to proceed immediately to a designated area for inspection.

22 ADVERTISING

Boats shall display the advertising supplied by the organizing authority on the jib.

23 SUPPORT BOATS

Team leaders, coaches and other support personnel shall stay outside areas where boats are racing from the time of the preparatory signal for the first class to start until all boats have finished or retired or the race committee signals a postponement, general recall or abandonment. Failure to comply with this instruction may lead to a penalty being imposed on the boat or boats associated with the support boat.

24 TRASH DISPOSAL

Boats shall not put trash in the water. Trash may be placed aboard support and race committee boats.

25 BERTHING

Boats shall be kept in their assigned places in the boat park.

26 RADIO COMMUNICATION

Except in an emergency, a boat shall neither make radio transmissions while racing nor receive radio communications not available to all boats. This restriction also applies to mobile telephones.

27 PRIZES

Prizes to be given are listed in the Notice of Race.

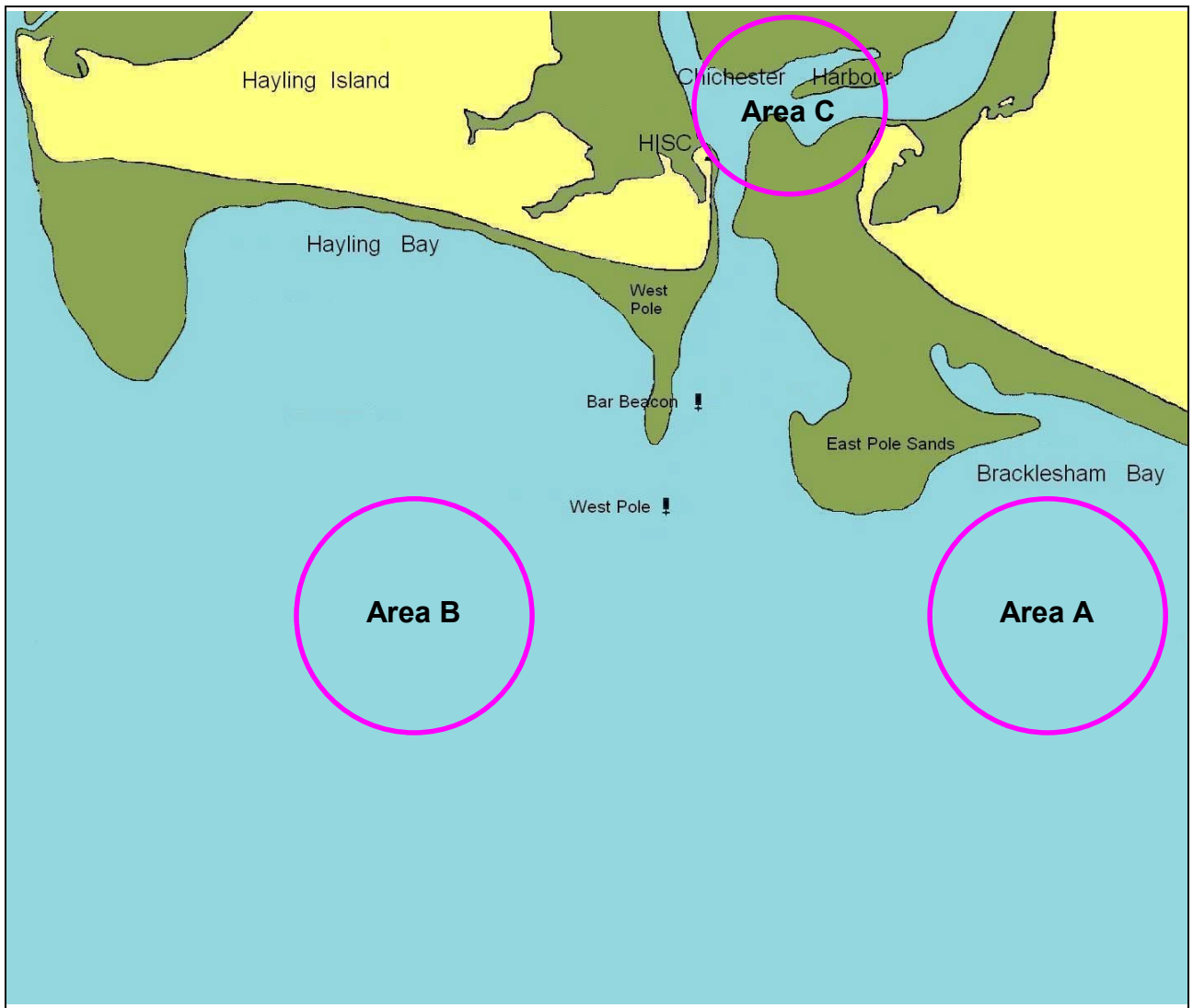
28 DISCLAIMER OF LIABILITY

Competitors participate in the regatta entirely at their own risk. See rule 4, Decision to Race. The organizing authority will not accept any liability for material damage or personal injury or death sustained in conjunction with or prior to, during, or after the regatta.

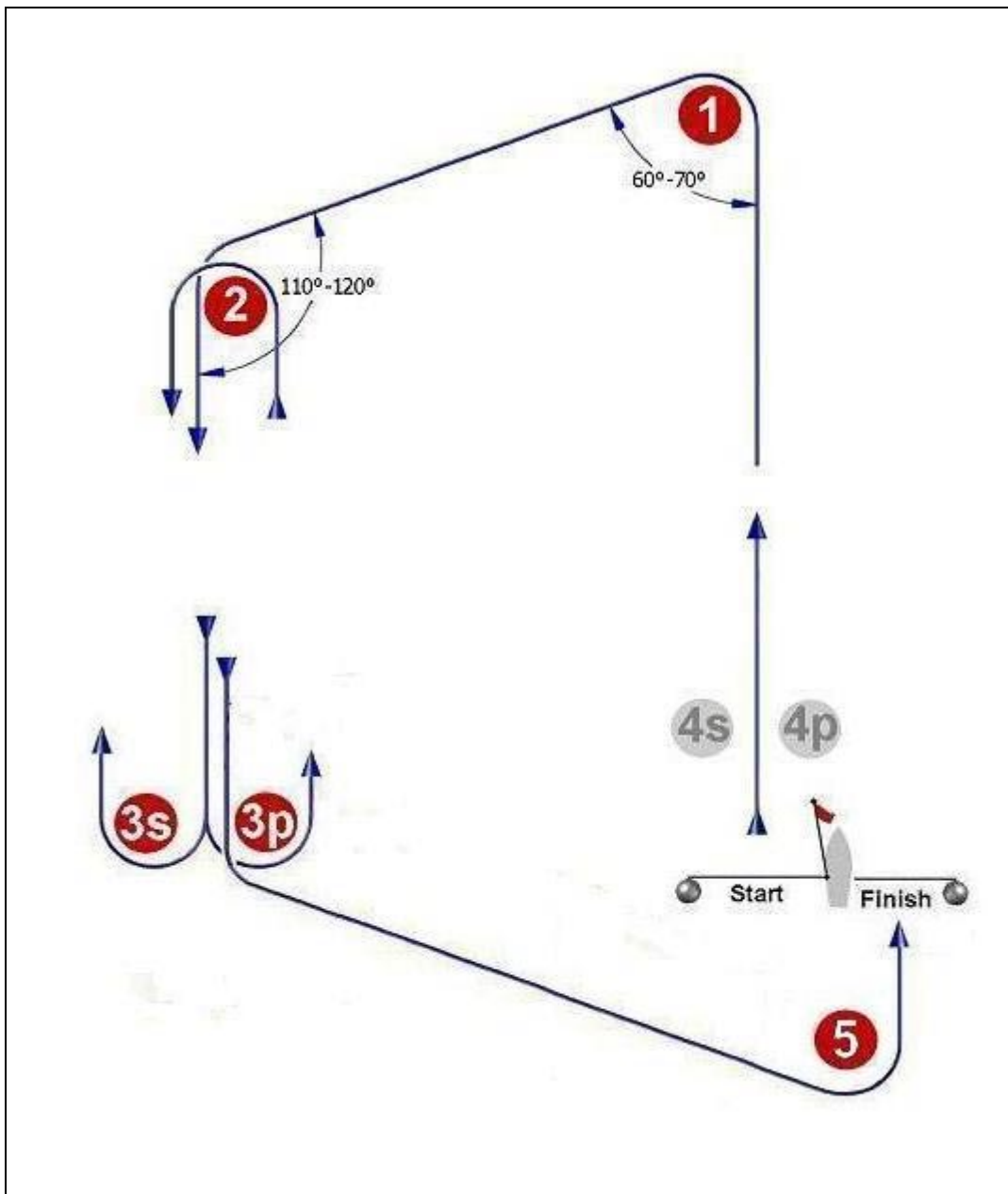
29 INSURANCE

Each participating boat shall be insured with valid third-party liability insurance with a minimum cover of £2million per event or the equivalent.

Attachment A
RACING AREA



Attachment B
COURSE DIAGRAM
TRAPEZOID OUTER

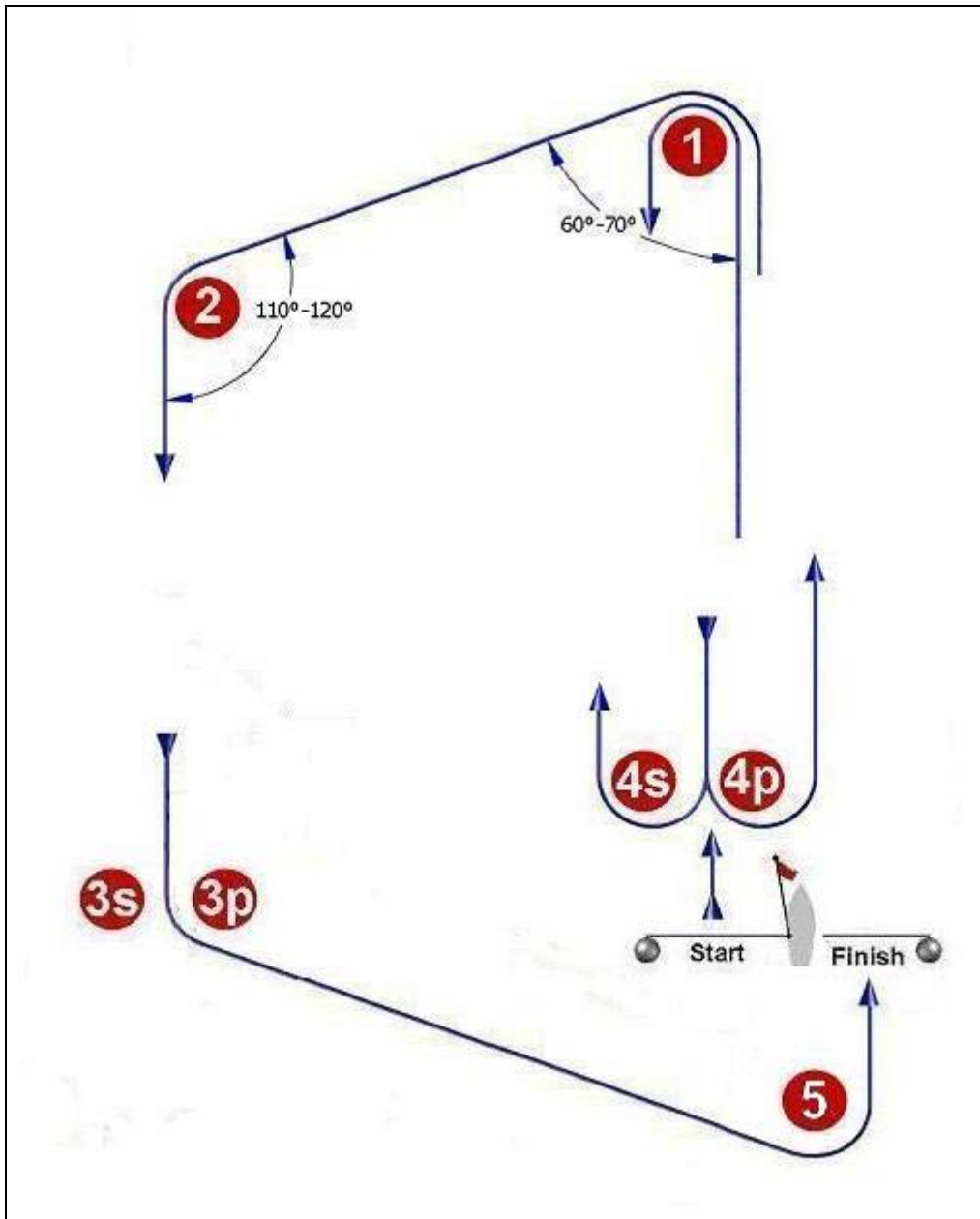


Signal: Mark rounding order:

O 2 Start – 1 – 2 – 3S/3P – 2 – 3P – 5 – Finish

O 3 Start – 1 – 2 – 3S/3P – 2 – 3S/3P – 2 – 3P – 5 – Finish

TRAPEZOID INNER



Signal: **Mark rounding order:**

I 2 **Start – 1 – 4S/4P – 1 – 2 – 3P – 5 – Finish**

I 3 **Start – 1 – 4S/4P – 1 – 4S/4P – 1 – 2 – 3P – 5 – Finish**