

Round Hayling Challenge Course and Safety Briefing

Round Hayling Challenge 2024



Welcome.

- 1) House keeping and stuff
- 2) Registration
- 3) Changing Rooms - Code
- 4) Coffee Food and Bar
- 5) Enjoy your visit to Hayling Island Sailing Club
- 6) Entertainment
- 7) Trackers – link via sailracer.com

House Keeping and stuff

1) Registration

1) Please make sure you pick up your vest and tracker

1) Bib number to be on the outside and visible at all times

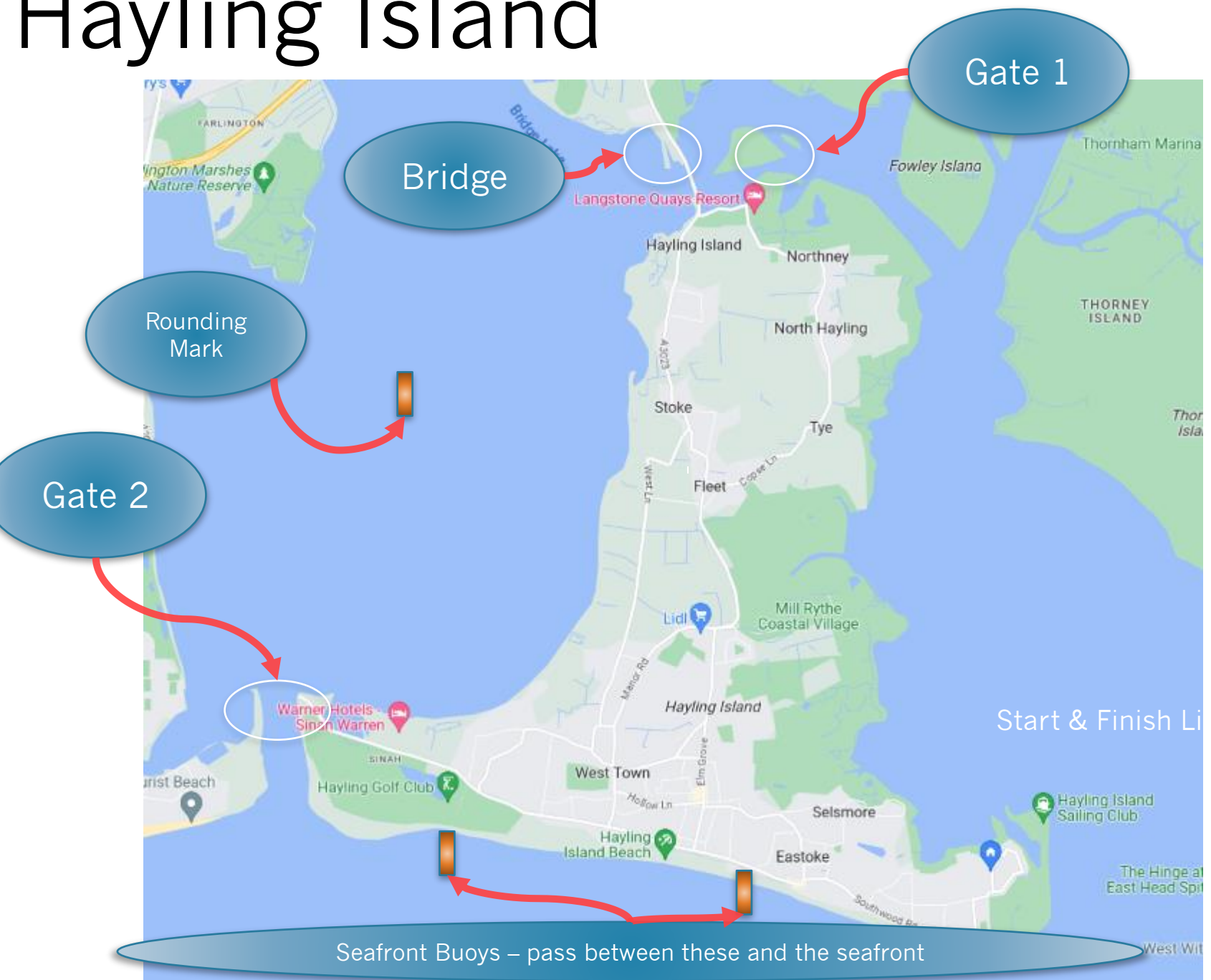
2) Sign off at the end

2) Follow all safety boat advice

3) Keep the island on the “left”

4) Clean Ocean – If it goes afloat – eat it, drink it, bring it back

Hayling Island



Tides: High Tide 14:44 - Height 4.5



Forecast Wind Direction ESE : 112.5



Options

Options

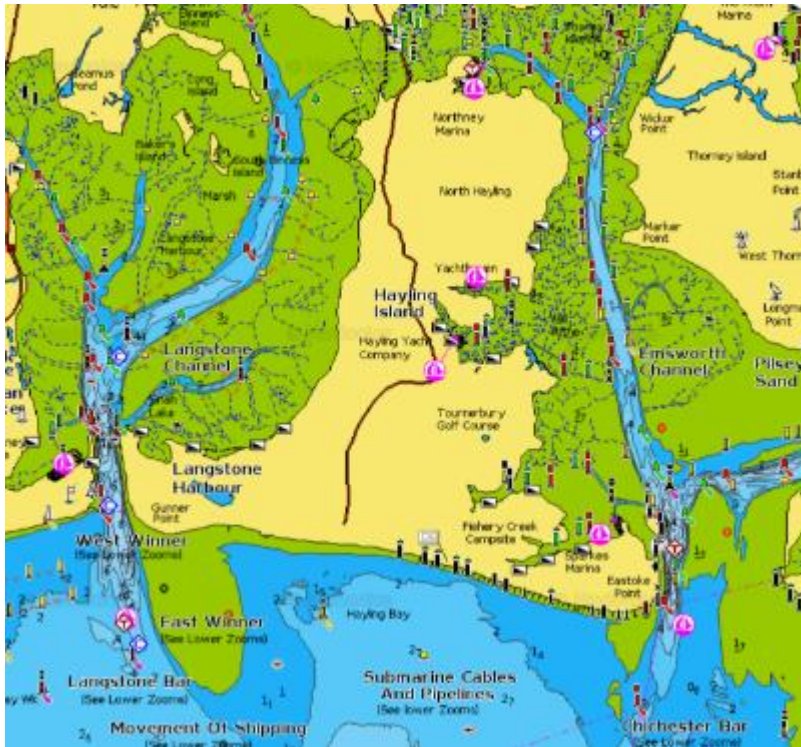
1. Northney and Back – approx. 9 Mile Course

- 1) Northney and back
- 2) Round the “gate boat and back to HISC
- 3) If red flag on gate boat – must go back.

2. Round Island – approx 14 miles in a straight line² “gates”

- 1) Northney
- 2) Langstone – “guard boat” and subject to timing
- 3) Two orange buoys anchored off the sea front – must pass between these and the seafront.

Mud and Currents and Stuff.



We will be near high tide, but if you run around be very careful (go back the way you came) – do NOT walk on the mud.

Strong tides, especially at Harbour entrances
East Winner – eddy may cause waves to back up
Chichester - stay out of the main channel

Northney Gate Boat



SALCOMBE
GIN®



Langstone Harbour Entrance Gate Boat



SALCOMBE
GIN®



HAYLING ISLAND SAILING CLUB
HISC

ROOSTER® 

Langstone Harbour Entrance

- 1) There will be a shore team at the Ferry Boat Inn
- 2) There will be a boat – positioned approx. opposite the Ferry Boat Inn – you must pass between the boat and Hayling Island. -
- 3) Red flag “Gate Closed” – you must stop

Langstone - beware



© David David Potter
MarineTraffic.com

Safety.

- 1) Wear trackers and yellow vests at all times
- 2) MUD – Do Not Get Off Your Craft – it is sticky, smelly and can be dangerous
- 3) Wait – assistance will be coming
- 4) Clothing – please insure that you are prepared for the day
- 5) Take water, munches and stuff
- 6) Shipping stay at least 500m clear –beware Langstone entrance
- 7) HISC Phone number – 02392 463768
- 8) VHF – channel 37a

Approx Start Times

1. SUP	12.40
2. Windsufer	13:00
3. Small Canoes / Kayaks	13:10
4. Wingfoiler / Foling Boards	13:15
5. OC2 / Other rowing craft	13.20
6. OC6 and Gigs	14:35

Start Sequence.

5 mins to go. Start Number Up

3 Minutes to go RED Flag up

2 Minutes RED down / ORANGE up

1 Minutes ORANGE down / GREEN up

Start GREEN FLAG DOWN

START LINE

1) FLAGPOLE on BEACH UNDER RACE BOX to NW
WINNER

Beware Tide

1) 1 knot of tide = 0.5meters per second



General Recall



FINISH LINES

1) OC / KAYAK / Windsurfers

- 1) By re-crossing start line.
- 2) Those finishing on club line, it really helps if you turn and show us your bib number after you cross the line

2) SUP AND ALL OTHER COURSES

- 1) ON BEACH Eastern Side of CLUB
- 2) INDICATED BY BLUE FLAGS
- 3) Come to flag

3) Other

- 1) FERRY BOAT INN – Shortened Course – RED FLAG
- 2) Need to make own way back to the club to hand in bib and tracker

SHORTENED COURSE

- 1) LANGSTONE HARBOUR ENTRANCE AND BRIDGE
- 2) RED FLAG FLYING AT GATE
- 3) DO NOT IGNORE
- 4) APPROX 15.00 at BRIDGE
- 5) APPROX 15.30 at Ferry Boat Inn – Finish on Beach

SIGNING OFF

- 1) CIRCUMNAVIGATION
- 2) HAND IN YOUR BIB AND TRACKER AT REGISTRATION OFFICE – AS SOON AS YOU COME ASHORE
- 3) FERRY BOAT INN – BY HANDING BIB AND TRACKER TO ARO ON SITE, who will record your finish position

QUESTIONS ON RACE



COURSE SAFETY



COURSE SAFETY

1) BIB AND TRACKER

2) Personal Buoyancy

3) RED FLAGS

4) SHORE TEAMS

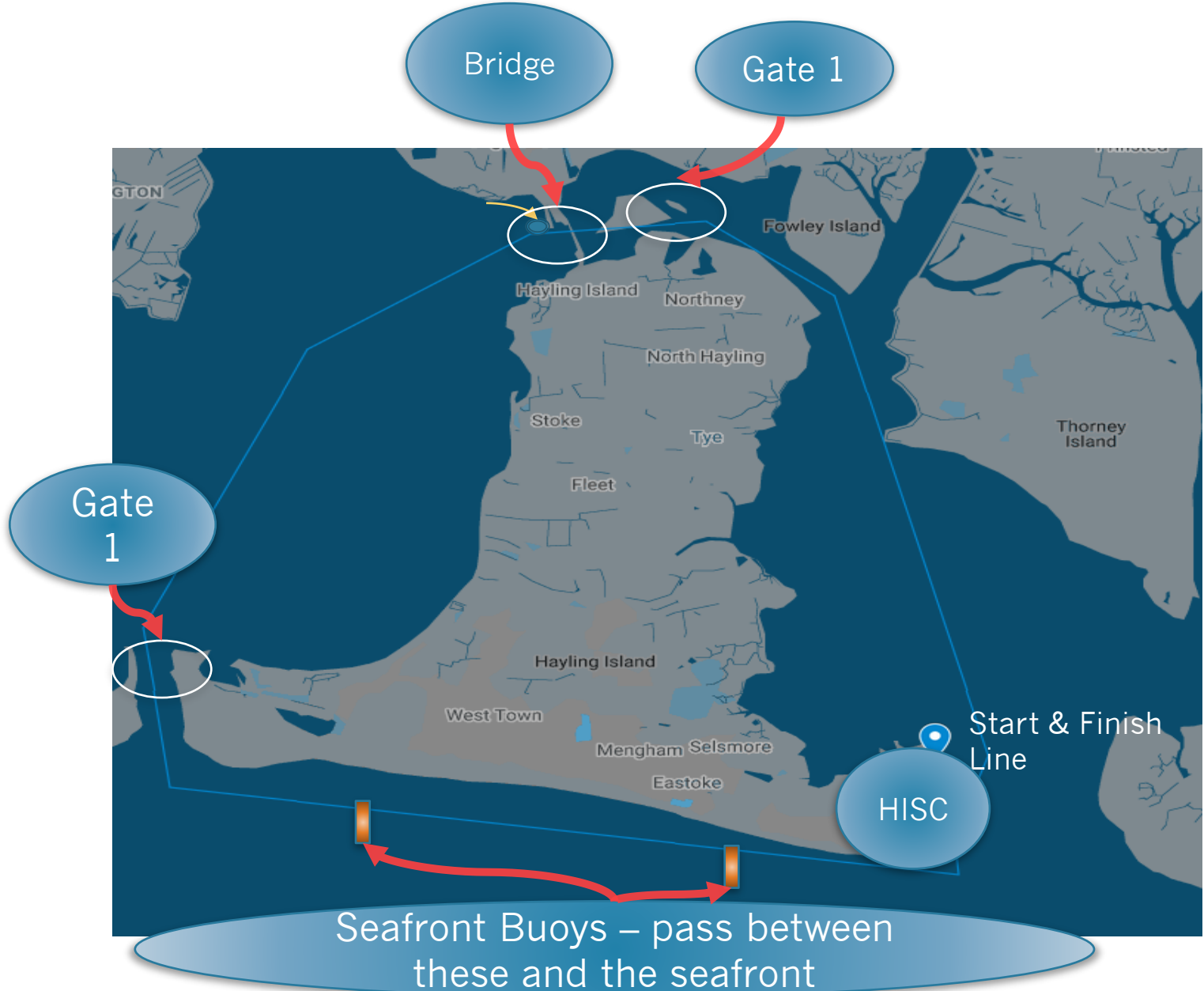
1) Bridge

2) Ferry Boat Inn

3) We may put someone on at Beachlands?



Hayling



WEATHER

Wind	Wave height	OC / Sea Kayak	SUP	Windsurfer
Less than 10kts	< 0.5m	Round Island	Round Island	Round Island
10 – 15Kts	< 0.5m	Round Island	Limited Round Island	Round Island
10 – 15Kts	>0.5m	Round Island	Chichester Harbour	Round Island
15 – 20Kts	~ 1m	Limited Round Island	Chichester Harbour	Round Island
20 plus	> 1m	Chichester Harbour	Chichester Harbour	Limited Round Island

For guidance only



QUESTIONS ON SAFETY

1) HISC Phone number – 02392 463768