



2019 Open Meeting for Optimist Class Main Fleet & Regatta Fleet

15 & 16 June 2019

Hayling Island Sailing Club, Hampshire, UK

SAILING INSTRUCTIONS

1 RULES

- 1.1 The regatta will be governed by the rules as defined in *The Racing Rules of Sailing*.
- 1.2 In all Rules governing this regatta:
[DP] denotes a rule for which the penalty is at the discretion of the protest committee.
[NP] denotes a rule that shall not be grounds for protest by a boat. This changes RRS 60.1(a).

2 COMMUNICATIONS WITH COMPETITORS

- 2.1 There will be a briefing for competitors on Saturday 15 June at 10:00 in the HISC clubhouse.
- 2.2 Notices to competitors will be posted on the official notice board, located in the race office, near the clubhouse entrance.
- 2.3 Signals made ashore will be displayed from the flag masts on the club race control box.
- 2.4 [DP][NP] Boats shall not leave the shore until flag D is displayed ashore. The warning signal will be made not less than 30 minutes after flag D is displayed.
- 2.5 Any change to the schedule of races will be posted by 19:00 on the day before it will take effect and any change to the sailing instructions will be posted at least 30 minutes before flag D is displayed (SI 2.4) on the day it will take effect.
- 2.6 The class flags will be:
Main fleet Flag O
Regatta fleet Flag R

3 SCHEDULE OF RACES

- 3.1 The race schedule is as follows:

Date:	Time of 1st warning signal & scheduled races per day:			HW Chichester Hbr Entrance:
	Time:	# Races: Main Fleet	# Races: Regatta Fleet	Time:
15 June	11:00	3	4	10:59
16 June	11:00	3	4	11:44

- 3.2 The warning signal for succeeding races each day will be made as soon as practicable; it is not intended to allow any break between races.
- 3.3 To alert boats that a race will begin soon, the orange starting line flag will be displayed with one sound at least two minutes before a warning signal is made.
- 3.4 No warning signal will be made after 15:30 on Sun 16 June.

4 RACING AREAS

Attachment A shows the location of racing areas *Alpha*, *Bravo* and *Charlie*. The area to be used will be posted each day on the official notice board.

5 THE COURSES

- 5.1 The diagrams in Attachment B show the courses, the course designations, the approximate angles between legs, the order in which marks are to be passed, and the side on which each mark is to be left.
- 5.2 The gate 4s/4p may be replaced by a single mark to be left to port.
- 5.3 No later than the warning signal, the race committee signal boat will display the course designation and the approximate compass bearing of the first leg.

6 MARKS

- 6.1 Marks 1, 1a, 2, 3, 4s, 4p and 5 will be inflated cylinders. Mark colours will be posted.
- 6.2 Starting marks will be a race committee signal boat at the starboard end and a boat or buoy with an orange flag at the port end.
- 6.3 Finishing marks will be a race committee boat, and a buoy with a blue flag.

7 THE START

The starting line will be between staffs displaying orange flags on the starting marks.

8 THE FINISH

The finishing line will be between staffs displaying blue flags on the finishing marks.

9 TIME LIMITS & TARGET TIMES

- 9.1 The time limit and target time in minutes is as follows:

<i>Fleet</i>	<i>Time limit</i>	<i>Finish window</i>	<i>Target time</i>
Main	60	10	40
Regatta	45	5	25

Failure to meet the target time will not be grounds for redress. This changes rule 62.1(a).

- 9.2 Boats failing to finish within the finish window time after the first boat sails the course and finishes will be scored according to their observed position on the course, which may be the position at the last mark rounded. This changes rules 35, A4 and A5.

10 PROTESTS & REQUESTS FOR REDRESS

- 10.1 Protest forms are available at the race office. Protests and requests for redress or reopening shall be delivered there within the appropriate time limit.
- 10.2 For each fleet, the protest time limit is 60 minutes after the last boat has finished the last race of the day.
- 10.3 Notices will be posted no later than 30 minutes after the protest time limit to inform competitors of hearings in which they are parties or named as witnesses.
- 10.4 Notices of protests by the race committee, technical committee or protest committee will be posted to inform boats under RRS 61.1(b).
- 10.5 Penalties for breaches of class rules, or rules in the NoR and SIs marked [DP], are at the discretion of the protest committee, and may be less than disqualification.
- 10.6 On the last scheduled day of racing, a request for redress based on a protest committee decision shall be delivered no later than 30 minutes after the decision was posted. This changes RRS 62.2.

11 SCORING

- 11.1 One race is required to be completed to constitute a regatta.
- 11.2 (a) When fewer than three races have been completed, a boat's series score will be the total of her race scores.
(b) When three or more races have been completed, a boat's series score will be the total of her race scores excluding her worst score.

- 11.3 A boat starting later than 4 minutes after her starting signal will be scored Did Not Start. This changes rules A4 and A5.
- 11.4 To request correction of an alleged error in posted race or series results, a boat may complete a scoring enquiry form available at the race office.

12 SAFETY REGULATIONS

- 12.1 [DP][NP] Competitors shall wear personal flotation devices at all times while afloat, except briefly while adjusting clothing or personal equipment.
- 12.2 Check-out and check-in of competitors will apply as follows:
- (a) The location of the tally control point to check-out and check-in competitors will be posted on the official notice board.
 - (b) Tallies comprise numbered rubber wristbands. Numbers will be allocated at registration, and posted on the official notice board. Tallies shall be worn visibly by all competitors, over clothing, on the right wrist, at all times while afloat.
 - (c) [DP][NP] Competitors shall check-out before racing by collecting their tallies.
 - (d) [DP][NP] Competitors shall check-in immediately on returning to shore after racing, by returning the tallies to tally control.
 - (e) The race committee may apply a standard penalty without a hearing for a breach (c) or (d) of this SI. The penalty will be 3 points added to the boat's series score. This changes RRS 63.1 and A5.
- 12.3 [DP][NP] A boat that retires from a race, or does not intend to start a race, shall notify the race committee as soon as possible.
- 12.4 [DP][NP] Boats shall return to and remain in their assigned berths whilst ashore.

13 SUPPORT BOATS

[DP] Support persons shall stay outside areas where boats are racing from the time of the preparatory signal for the first class to start until all boats have finished or retired or the race committee signals a postponement, general recall or abandonment.

14 RADIO COMMUNICATION

[DP][NP] Except in an emergency, a boat that is racing shall not make voice or data transmissions and shall not receive voice or data communication that is not available to all boats.

15 INSURANCE

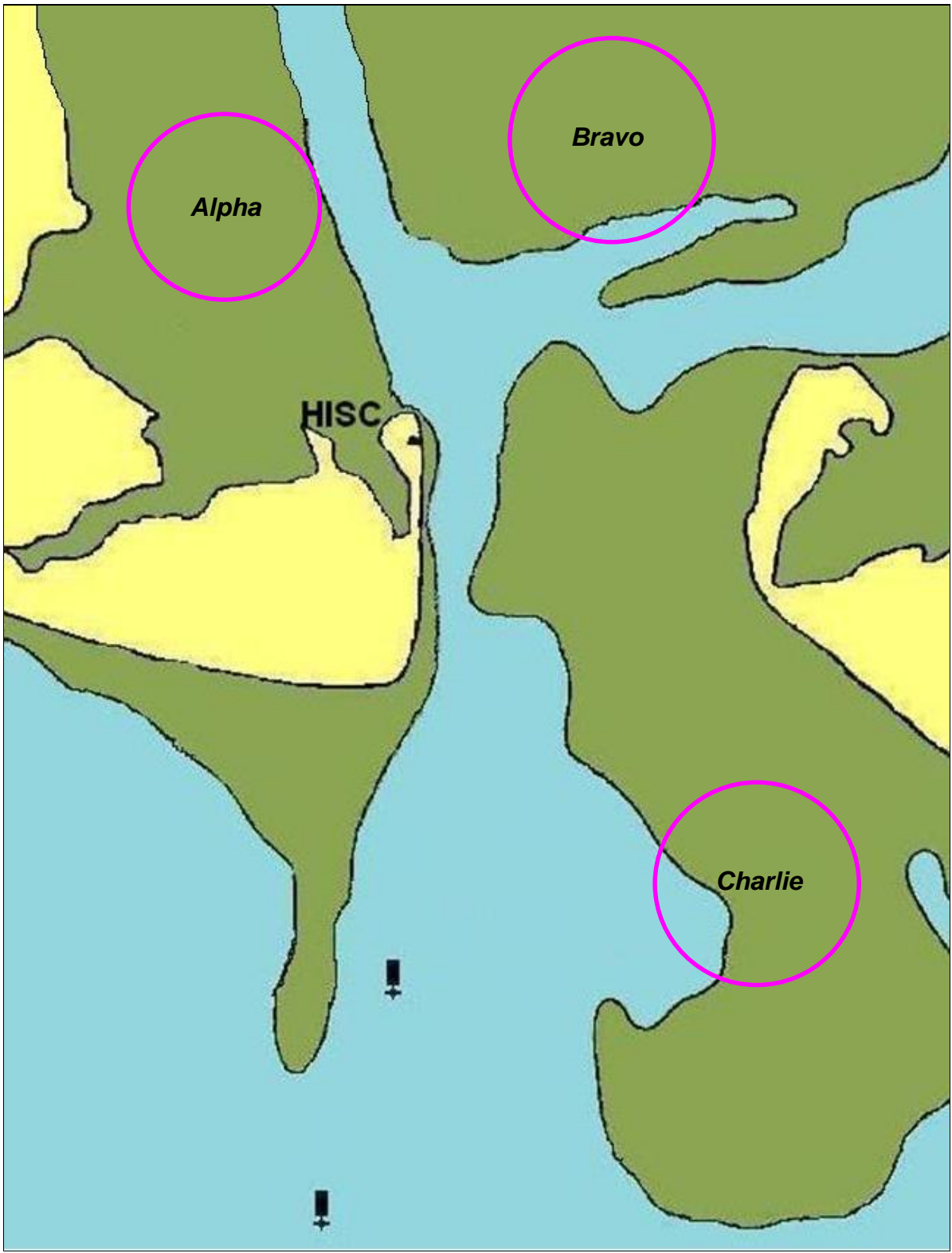
[DP][NP] Each participating boat shall be insured with valid third-party liability insurance with a minimum cover of £2million per event or the equivalent.

16 RISK STATEMENT

- 16.1 Rule 4 of the Racing Rules of Sailing states: "The responsibility for a boat's decision to participate in a race or to continue racing is hers alone."
- 16.2 Sailing is by its nature an unpredictable sport and therefore inherently involves an element of risk. By taking part in the event, each competitor agrees and acknowledges that:
- (a) They are aware of the inherent element of risk involved in the sport and accept responsibility for the exposure of themselves, their crew and their boat to such inherent risk whilst taking part in the event;
 - (b) They are responsible for the safety of themselves, their crew, their boat and their other property whether afloat or ashore;
 - (c) They accept responsibility for any injury, damage or loss to the extent caused by their own actions or omission;
 - (d) Their boat is in good order, equipped to sail in the event and they are fit to participate;
 - (e) The provision of a race management team, patrol boats and other officials and volunteers by the event organizer does not relieve them of their own responsibilities;

- (f) The provision of patrol boat cover is limited to such assistance, particularly in extreme weather conditions, as can be practically provided in the circumstances.
- (g) It is their responsibility to familiarize themselves with any risks specific to this venue or this event drawn to their attention in any rules and information produced for the venue or event and to attend any safety briefing held for the event.

**Attachment A
RACING AREAS**



Attachment B
COURSE DIAGRAMS

Course I Inner Trapezoid

Signal: Mark rounding order:

I2 Start – 1 – 4s/4p – 1 – 2 – 3p – 5 – Finish

I3 Start – 1 – 4s/4p – 1 – 4s/4p – 1 – 2 – 3p – 5 – Finish

Course LA Windward/Leeward with Offset Mark 1a

Signal: Mark rounding order:

LA2 Start – 1 – 1a – 4s/4p – 1 – 1a – 4p – Finish

LA3 Start – 1 – 1a – 4s/4p – 1 – 1a – 4s/4p – 1 – 1a – 4p – Finish

Course L Windward/Leeward

Signal: Mark rounding order:

L2 Start – 1 – 4s/4p – 1 – 4p – Finish

L3 Start – 1 – 4s/4p – 1 – 4s/4p – 1 – 4p – Finish